



PERSONS NOT IN THE LABOUR FORCE, AUSTRALIA (including persons who wanted to work but who were not defined as unemployed) SEPTEMBER 1983

PHONE INQUIRIES *for more information about these statistics*—contact Ms Pam Hahne on Canberra (062) 52 6503 or any of our State offices.
other inquiries including copies of publications—contact Information Services on Canberra (062) 52 6627 or in any of our State offices.

MAIL INQUIRIES *write to* Information Services, ABS, P.O. Box 10, Belconnen, A.C.T. 2616 or any of our State offices.

CONTENTS

| Table | Page |
|---|------|
| . . . Explanatory notes | 1 |
| . . . Summary of findings | 4 |
| 1 Civilian population aged 15 years and over and employment status | 7 |
| A. PERSONS NOT IN THE LABOUR FORCE | |
| Persons Not in the Labour Force— | |
| 2 Occupation in last job and age | 7 |
| 3 Occupation in last job and main activity | 8 |
| 4 Whether wants to work, whether available to start work within four weeks and reason for leaving last job | 9 |
| Persons who have had a job— | |
| 5 Time since last job and reason for leaving last job | 10 |
| 6 Status of worker, full-time part-time status in last job and reason for leaving last job | 11 |
| 7 Time since last job and whether looked for work in the last twelve months | 12 |
| Persons who wanted to work— | |
| 8 Age, intention to look for work and type of work preferred | 13 |
| 9 Intention to look for work and whether available to start work within four weeks | 14 |
| 10 Type of work preferred and whether available to start work within four weeks | 14 |
| B. PERSONS WITH MARGINAL ATTACHMENT TO THE LABOUR FORCE | |
| 11 Persons with marginal attachment to the labour force | 15 |
| Persons who wanted to work and were available to start work within four weeks | |
| 12 Main reason for not actively looking for work and intention to look for work | 15 |
| 13 Intention to look for work, whether looked for work in the last 12 months and work experience | 16 |
| 14 Work experience and whether looked for work in the last 12 months | 17 |
| 15 Discouraged jobseekers, intention to look for work, whether looked for work in the last 12 months and work experience | 18 |
| 16 Summary of characteristics | 19 |
| 17 Age and main reason for not actively looking for work | 20 |
| 18 Age and all reasons for not actively looking for work | 21 |
| C. PERSONS WITHOUT MARGINAL ATTACHMENT TO THE LABOUR FORCE | |
| Persons who wanted to work but were not actively looking for work and were not available to start work within four weeks | |
| 19 Reason not available to start work within four weeks and intention to look for work | 22 |
| 20 Reason not available to start work within four weeks and age | 22 |
| 21 Type of work preferred and reason not available to start work within four weeks | 23 |
| . . . Technical note | 24 |

EXPLANATORY NOTES

NOTE

(i) *New or amended concepts and definitions have been introduced in the September 1983 survey, causing a break in series. Refer to paragraphs 17 to 24 for more detail.*

Introduction

Since 1975, the ABS has conducted regular surveys of persons not in the labour force, seeking information on their labour force aspirations and, if appropriate, their availability for work and reasons for not currently looking for work. As interest has grown over the years in this component of the population, various modifications have been made to the survey to provide a more comprehensive range of data. The September 1983 survey has been further modified by the introduction of a new concept, 'marginal attachment to the labour force' (see paragraphs 4 and 11), and some improvements have been made to the measure of discouraged jobseekers. These changes have caused a break in series (see paragraphs 17 to 24).

2. Persons not in the labour force are by definition those persons who do not meet the criteria that would enable them to be classified as being in the labour force. To be classified as being in the labour force, a person must be aged 15 years or over and be either employed or unemployed. Definitions of *employed* and *unemployed* are given in *The Labour Force, Australia* (6203.0).

3. *Persons not in the labour force*, therefore, include all persons aged 15 years and over who are not employed; who want work but do not meet the criteria to be classified as unemployed; who do not want to work; or who through incapacity or infirmity can not work.

4. The revised survey now provides more detailed characteristics concerning those persons who do not meet all of the criteria to be classified as unemployed but who have marginal attachment to the labour force. For the purposes of this survey, marginal attachment includes persons who were not actively looking for work but who wanted to work and were available to start work within four weeks and persons who were actively looking for work but were not available for work in the week prior to interview (the survey week).

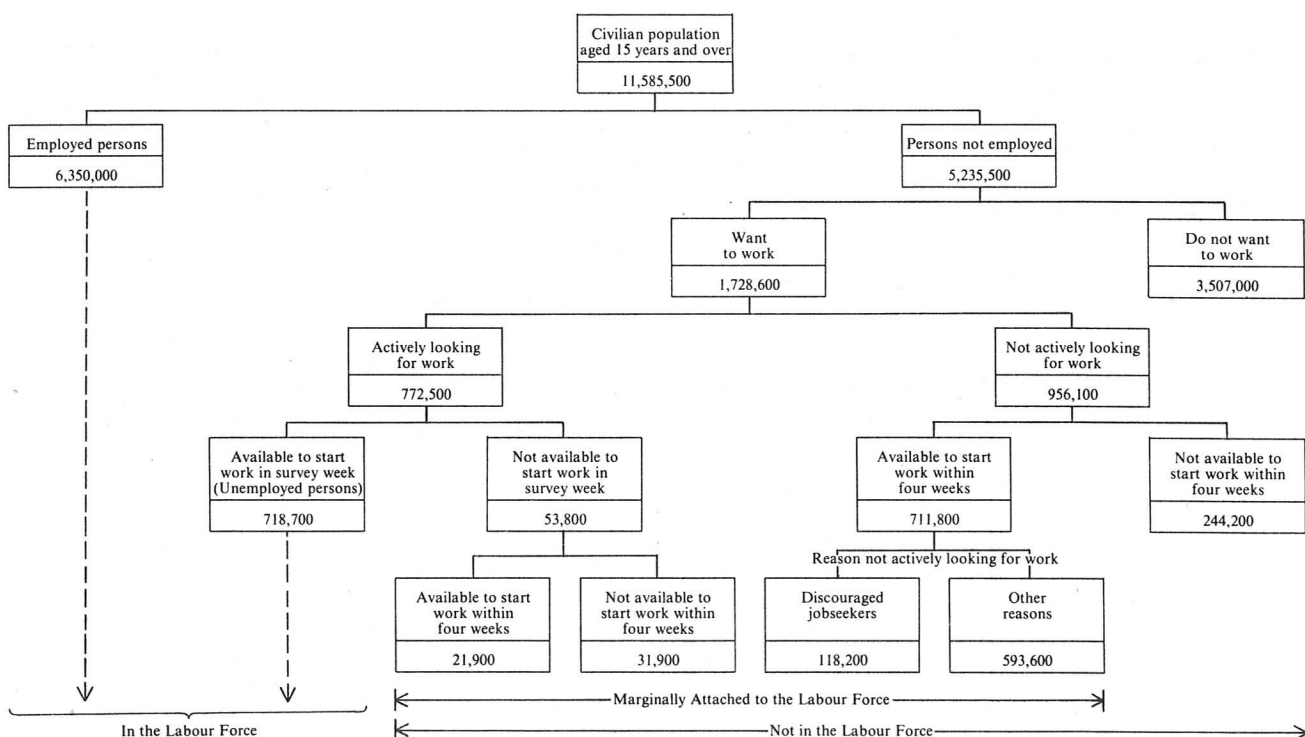
5. The criteria determining those in the labour force are based on actual activity (i.e. working or looking for work) during the survey week. The criteria determining marginal attachment to the labour force, in particular the concepts of wanting to work, availability to start work and reasons for not actively looking, are more subjective and are not based on respondents' actual activity. Hence, the measurement these criteria is affected by the respondents' own interpretation of the concepts used. Individual respondent's interpretation is affected by such factors as the respondent's work aspirations, as well as their family, economic and other commitments.

6. *Discouraged jobseekers* (a subcategory of those marginally attached) are those persons who were available to start work within four weeks but who were not actively looking for work for reasons which are assessed to indicate discouragement. (Refer to paragraph 15 for a fuller definition).

7. The survey also provides details of those persons who stated that they want to work, but who are not defined as marginally attached to the labour force.

8. The various groups of persons either in the labour force or not in the labour force, including those marginally attached to the labour force, are shown schematically in the following diagram.

RELATIONSHIP OF PERSONS MARGINALLY ATTACHED TO THE LABOUR FORCE TO PERSONS IN OR NOT IN THE LABOUR FORCE



9. This survey was run in conjunction with the September 1983 labour force survey conducted throughout Australia. During the two weeks beginning Monday 12 September 1983 specially trained interviewers asked questions of those of the 71,000 respondents in the September labour force survey who fell within the scope of this survey.

Scope

10. The survey includes all persons not in the labour force aged fifteen years and over except:

- (a) certain diplomatic personnel of overseas governments, customarily excluded from census and estimated populations;
- (b) overseas residents in Australia;
- (c) dependants of non-Australian defence forces personnel stationed in Australia.

Definitions

11. *Persons marginally attached to the labour force* are those who are not in the labour force in survey week and:

- (a) *wanted to work and were available to start within four weeks; or*
- (b) *were actively looking for work but were not available to start work within four weeks.*

12. *Persons who wanted to work and were available to start within four weeks* are those who:

- (a) in the four weeks up to the end of the survey week had taken *active steps* to find work and who were available to start work within four weeks, even though they were unable to start in survey week for reasons other than own temporary illness or injury; or
- (b) were available to start work within four weeks and:
 - (i) although claiming to have looked for work in the four weeks up to the end of the survey week, and had not taken *active steps* to find work; or
 - (ii) in the four weeks up to the end of the survey week had not looked for work but in the survey answered 'yes' or 'maybe' to the question '*Even though you have not been looking for work would you like a full-time or part-time job?*'.

13. *Persons who are actively looking for work but are not available to start work within four weeks* are those who in the four weeks up to the end of survey week had taken active steps to find work but were not available to start work in survey week for reasons other than own temporary illness or injury or within the four weeks following the interview.

14. *Active steps* to find work include writing, telephoning or applying in person to an employer for work; answering a newspaper advertisement for a job; checking factory or Commonwealth Employment Service noticeboards; being registered with the Commonwealth Employment Service; checking or registering with any other employment agency; advertising or tendering for work; and contacting friends or relatives.

15. *Discouraged jobseekers* are those persons marginally attached to the labour force who wanted to work and were available to start work within four weeks but whose main reason for not taking active steps to find work was that they believed they would not be able to find a job for any of the following reasons: considered by employers to be too young or too old; language or racial difficulties; lack the necessary training, skills or experience; no jobs in their locality or line of work or no jobs at all available.

16. Further definitions of labour force and demographic categories appearing in this publication are given in *The Labour Force, Australia* (6203.0).

Discontinuities in the series

17. The modifications made to the September 1983 survey included the addition of certain groups of persons excluded from previous 'Persons Not in the Labour Force' surveys and several alterations to the order and wording of questions used in the survey.

18. Only those respondents who reported that they were available to start work within the next four weeks were asked their reasons for not actively looking for work. Hence persons classified as discouraged jobseekers in this survey must have been available to start work within four weeks. This availability criterion was not applied to the definition of discouraged jobseekers in previous surveys. The application of the criterion removes the previous anomaly that persons were classified as discouraged jobseekers regardless of whether or not they were available to start work in the near future. In previous surveys, the number of discouraged jobseekers who were not available to start work within four weeks was small in comparison with the total number of discouraged jobseekers (in recent surveys between 4.0 per cent and 6.5 per cent).

19. Persons not in the labour force aged 65 years and over are now included in the survey and may be classified as being discouraged jobseekers or as otherwise marginally attached to the labour force. An additional 30,600 persons who wanted to work and were available to start and 13,100 discouraged jobseekers aged 65 years and over were included in the September 1983 survey.

20. Persons belonging to two other groups are now included in the survey:

- (a) persons who were actively looking for work but who were unable to start in survey week for reasons other than their own temporary illness or injury (21,900 persons). These persons are classified as marginally attached, but not as discouraged jobseekers; and
- (b) persons who had been away from work without pay for four weeks or longer and had not been actively looking for work (26,900 persons). Of these, 10,900 persons wanted to work and were available to start work within four weeks, and therefore are classified as marginally attached, but not as discouraged jobseekers.

21. Respondents not in the labour force who wanted to work and were available to start within four weeks were asked their *main* reason for not actively looking for work to determine, among other things, whether the respondents should be classified as discouraged jobseekers. In earlier surveys, the *main* reason was not asked, and respondents were classified as discouraged jobseekers or otherwise according to the 'highest ranked reason' given for not actively looking for work. For a more detailed explanation of the earlier methodology, reference should be made to previous issues of this bulletin. 22,800 persons in the September 1983 survey gave a higher ranked reason than discouraged yet indicated their main reason was one of discouragement. Under the earlier methodology, these persons would not have been classified as discouraged.

22. An extra reason for not actively looking for work ('no jobs at all') was added to the discouraged jobseeker list. 39,700 discouraged jobseekers gave this reason for not looking for work. However, it is not possible to estimate the number of these who would previously have given another discouraged reason for not actively looking for work e.g. 'no jobs in locality/line of work'. Thus the effect on the estimated number of discouraged jobseekers using the new methodology can not be determined.

23. A change was made to the ordering of the questions. The responses to some questions may differ from responses in previous surveys because of this change to question order and the subjective nature of some of the questions. It is not possible to measure the effects of this change to question order on the data.

24. While some of the changes to the survey methodology, such as the inclusion of persons aged 65 years and over and the classification of discouraged jobseekers according to their main reason for not actively looking for work, can be measured, some other changes, such as the introduction of the availability criterion to the definition of discouraged jobseekers (see paragraph 18), the introduction of the reason 'no jobs at all' to the discouraged jobseeker list, and changes to the ordering of questions, can not be quantified. It is therefore not

possible to indicate whether the estimates of persons who wanted to work and were available to start or of discouraged jobseekers have increased or decreased since the last survey.

Reliability of the estimates

25. Estimates in this publication are subject to two sources of error:

- (a) *sampling error*: since the estimates are based on information obtained from occupants of a sample of dwellings, they may differ from the figures that would have been produced if all dwellings had been included in the survey. More information on this topic is given in the Technical note.
- (b) *non-sampling error*: inaccuracies may occur because of imperfections in reporting by interviewers and respondents and errors made in the coding and processing of data. These inaccuracies may occur in any enumeration, whether it be a full count or only a sample. Every effort is made to reduce the non-sampling error to a minimum by careful design of questionnaires, intensive training and supervision of interviewers and efficient operating procedures.

Related publications

26. Other ABS publications which may be of interest include:

The Labour Force, Australia (6203.0)—issued monthly

Labour Force Experience, Australia, during the year ending February 1983 (6206.0)

Persons Not in the Labour Force, Australia, March 1983 (6220.0)

Persons Looking for Work, Australia, July 1983 (6222.0)

27. Current publications produced by the ABS are listed in the *Catalogue of Publications, Australia* (1101.0). The ABS also issues, on Tuesdays and Fridays, a *Publications Advice* (1105.0) which lists publications to be released in the next few days. The Catalogue and Publications Advice are available from any ABS office.

Symbols and other usages

- * subject to sampling variability too high for most practical uses. See paragraph 25 above.
- .. not applicable.
- n.e.c. not elsewhere classified.

28. Because figures have been rounded, discrepancies may occur between sums of the component items and totals.

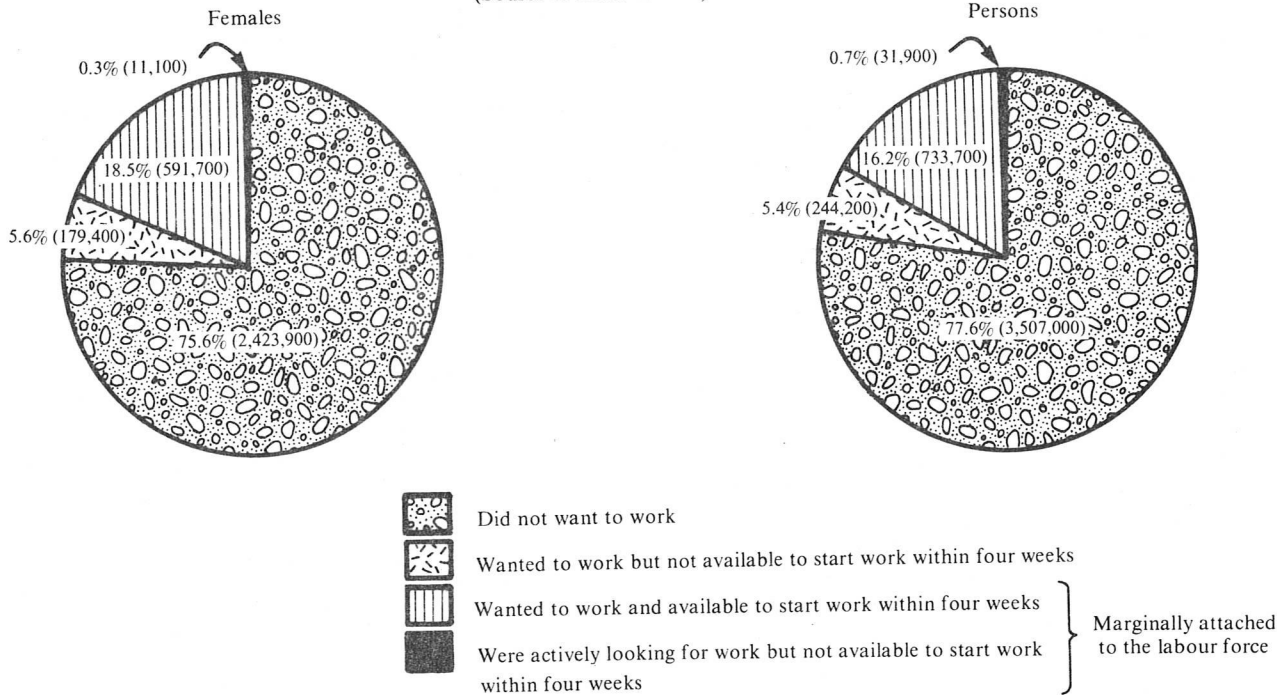
R. J. CAMERON
Australian Statistician

SUMMARY OF FINDINGS

Persons with marginal attachment to the labour force

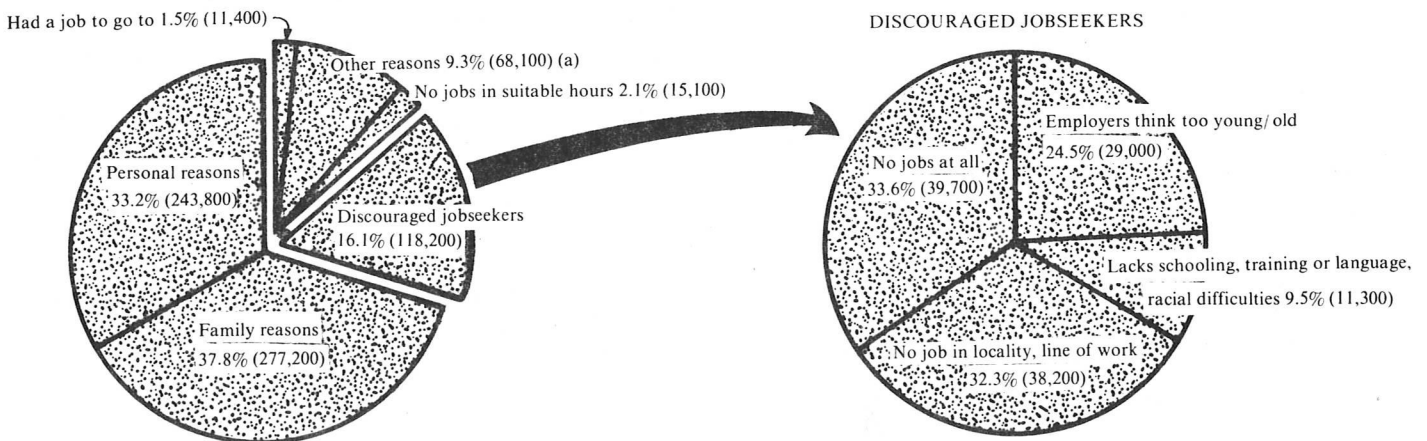
Of the 4,516,800 persons not in the labour force 765,600 (16.9 per cent) wanted to work and were either available to start work within four weeks or were actively looking for work but were not available to start work within four weeks. Persons falling into these categories have been defined as being marginally attached to the labour force. The majority of persons (78.7 per cent) falling into this group were females.

DIAGRAM 1. PERSONS NOT IN THE LABOUR FORCE
(Source of Data: Table 1)



Of the 733,700 persons not in the labour force who wanted to work and were available to start work within four weeks, 118,200 (16.1 per cent) were discouraged jobseekers. The majority of the remaining persons in this group were not looking for work for family or personal considerations (521,000 or 71.0 per cent). Of the discouraged jobseekers 39,700 (33.6 per cent) were not looking for work because they believed there were no jobs at all. A further 38,200 (32.3 per cent) were not looking because they believed there were no jobs in locality or line of work and 29,000 (24.5 per cent) were not looking because they believed that employers thought that they were either too young or too old.

DIAGRAM 2. PERSONS NOT IN THE LABOUR FORCE WHO WANTED TO WORK AND WERE AVAILABLE TO START WORK WITHIN FOUR WEEKS: MAIN REASON NOT LOOKING FOR WORK
(Source of Data: Table 17)

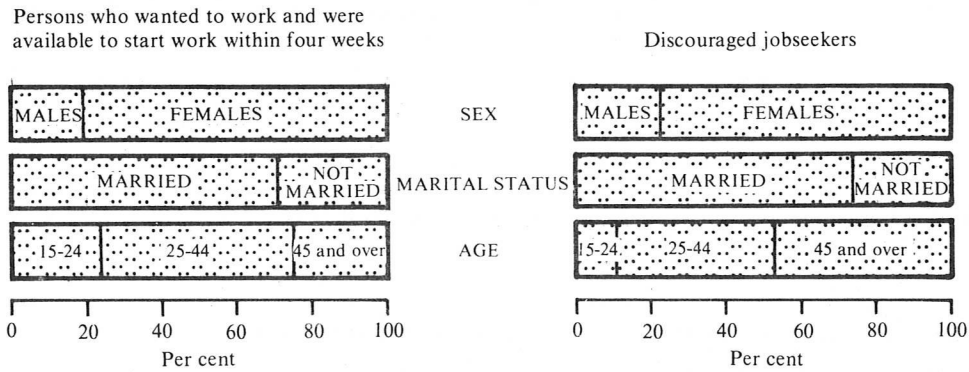


(a) Includes persons who did not know and other reasons not shown separately.

The majority of persons who wanted to work and were available to start within four weeks were females (591,700 or 80.6 per cent). Similarly discouraged job seekers were mainly female (91,800 or 77.7 per cent). The majority of persons in these two groups were also married (71.3 and 74.0 per cent).

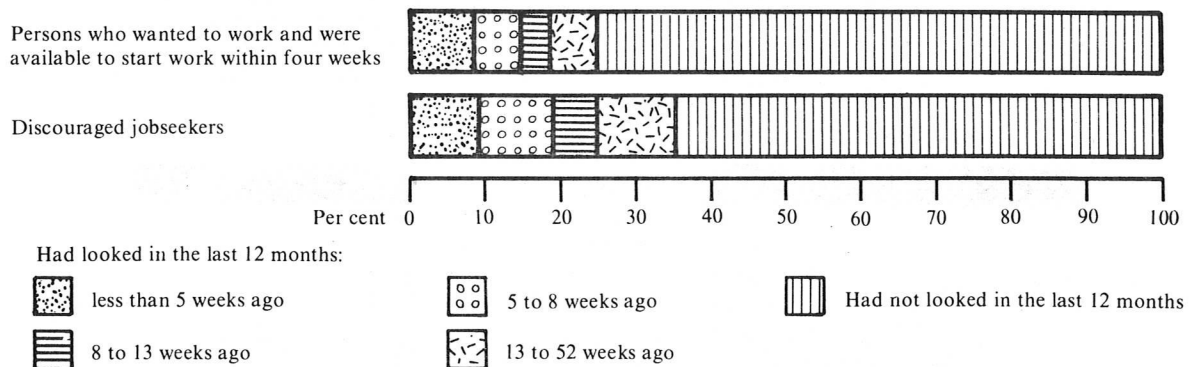
Almost one quarter of persons who wanted to work and were available to start were aged between 15 and 24 years whereas for discouraged jobseekers the age group only represented 10.9 per cent. The converse applies for persons in the 45 years and over age group, who formed 25.0 per cent of persons who wanted to work and were available to start work within four weeks compared with 47.4 per cent of discouraged job seekers; indicating that younger people were less likely to be discouraged job seekers.

DIAGRAM 3. PERSONS NOT IN THE LABOUR FORCE WHO WANTED TO WORK AND WERE AVAILABLE TO START WORK WITHIN FOUR WEEKS: SEX, MARITAL STATUS AND AGE
(Source of Data: Table 16)



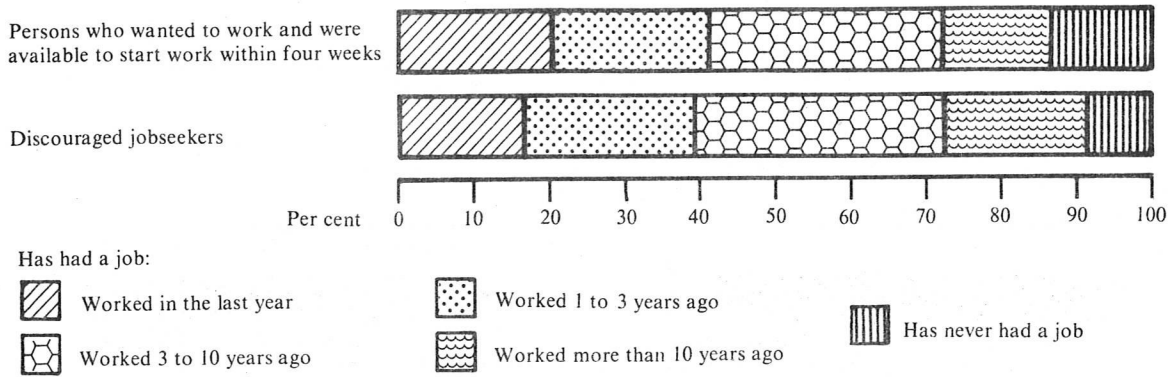
The survey showed that discouraged jobseekers were more likely to have looked for work in the last 12 months than others within the group of persons who wanted to work and were available to start work within four weeks. 35.5 per cent of discouraged jobseekers had looked for work in that period, compared with 25.0 per cent for the larger group.

DIAGRAM 4. PERSONS NOT IN THE LABOUR FORCE WHO WANTED TO WORK AND WERE AVAILABLE TO START WORK WITHIN FOUR WEEKS: WHETHER LOOKED FOR WORK IN THE LAST 12 MONTHS
(Source of Data: Tables 13 and 15)



The survey showed that discouraged jobseekers are also more likely to have had previous work experience than others in the group of persons who wanted to work and were available to start work within four weeks. 91.3 per cent of discouraged jobseekers had previous work experience, compared with 86.6 per cent for the larger group.

DIAGRAM 5. PERSONS NOT IN THE LABOUR FORCE WHO WANTED TO WORK AND WERE AVAILABLE TO START WORK WITHIN FOUR WEEKS: WORK EXPERIENCE
(Source of Data: Tables 13 and 15)



Persons without marginal attachment to the labour force but who wanted to work

More than half of the 244,100 persons who wanted to work but were not actively looking for work and were not available to start work within four weeks were not available for personal reasons. 63,200 (25.9 per cent) of these were unavailable due to own ill health and a further 60,500 (24.8 per cent) were unavailable as they were studying. Of the 179,400 females who wanted to work but were not actively looking for work and were not available to start work within four weeks, 64,300 (35.8 per cent) were unavailable because the children are too young. A further 23,300 (13.0 per cent) were unavailable for other family reasons.

DIAGRAM 6. PERSONS WHO WANTED TO WORK BUT WERE NOT ACTIVELY LOOKING FOR WORK AND WERE NOT AVAILABLE TO START WORK WITHIN FOUR WEEKS: REASON NOT AVAILABLE
(Source of Data: Table 20)

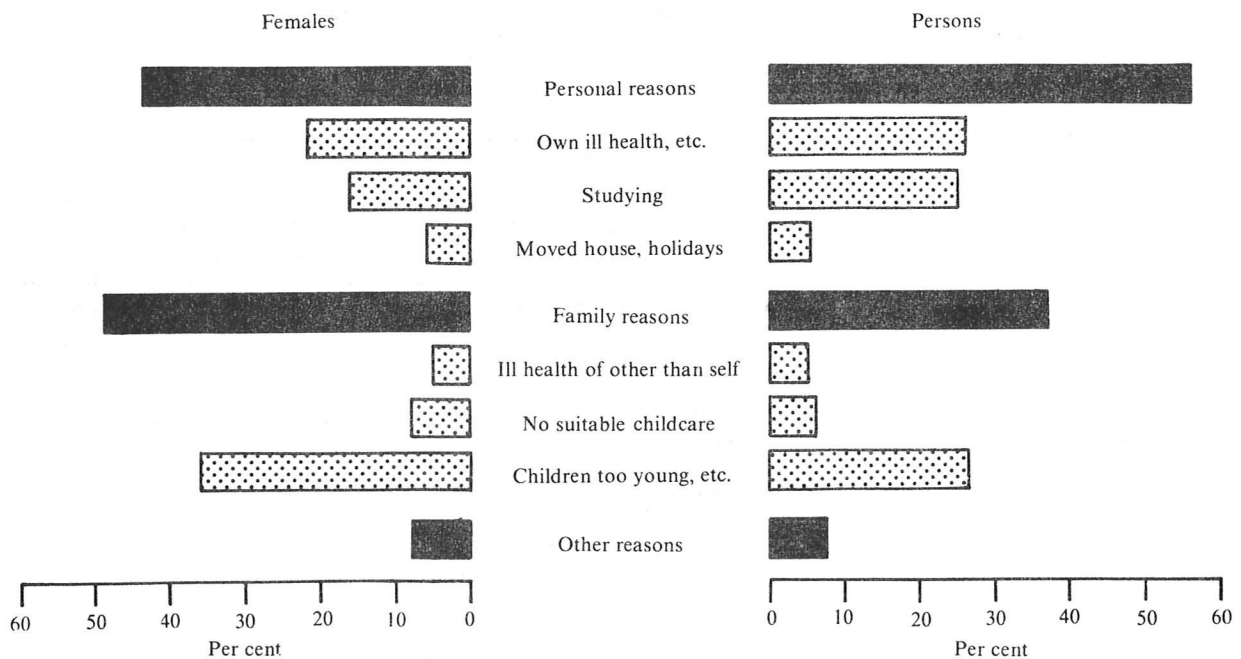


TABLE 1. CIVILIAN POPULATION AGED 15 YEARS AND OVER : EMPLOYMENT STATUS, SEPTEMBER 1983

| | Males | Females | Persons | Males | Females | Persons |
|--|---------|---------|----------|------------|---------|---------|
| | (' 000) | | | (per cent) | | |
| Civilian population aged 15 years and over | 5,725.7 | 5,859.9 | 11,585.5 | 100.0 | 100.0 | 100.0 |
| Employed | 3,979.6 | 2,370.3 | 6,350.0 | 69.5 | 40.5 | 54.8 |
| Unemployed | 435.3 | 283.4 | 718.7 | 7.6 | 4.8 | 6.2 |
| Persons not in the labour force | 1,310.7 | 3,206.1 | 4,516.8 | 22.9 | 54.7 | 39.0 |
| Marginally attached to the labour force | 162.8 | 602.8 | 765.6 | 2.8 | 10.3 | 6.6 |
| Wanted to work and available to start work within four weeks | 142.0 | 591.7 | 733.7 | 2.5 | 10.1 | 6.3 |
| Were actively looking for work | 7.4 | 14.4 | 21.9 | 0.1 | 0.2 | 0.2 |
| Were not actively looking for work | 134.6 | 577.3 | 711.8 | 2.4 | 9.9 | 6.1 |
| Were actively looking for work but not available to start work within four weeks | 20.8 | 11.1 | 31.9 | 0.4 | 0.2 | 0.3 |
| Wanted to work but not available to start work within four weeks(a) | 64.8 | 179.4 | 244.2 | 1.1 | 3.1 | 2.1 |
| Did not want to work | 958.4 | 2,267.0 | 3,225.4 | 16.7 | 38.7 | 27.8 |
| Permanently unable to work | 44.9 | 32.4 | 77.3 | 0.8 | 0.6 | 0.7 |
| In institutions(b) | 79.8 | 124.5 | 204.3 | 1.4 | 2.1 | 1.8 |

(a) These persons have not been actively looking for work. (b) Includes students boarding at school, some patients in hospitals and sanatoria and inmates of reformatories, jails, etc.

A. PERSONS NOT IN THE LABOUR FORCE

TABLE 2. PERSONS NOT IN THE LABOUR FORCE(a) : OCCUPATION IN LAST JOB(b) AND AGE, SEPTEMBER 1983 (' 000)

| Occupation in last job(b) | Age group (years) | | | | | | | | Total |
|---|-------------------|-------|-------|-------|-------|-------|-------|-------------|---------|
| | 15-19 | 20-24 | 25-34 | 35-44 | 45-54 | 55-59 | 60-64 | 65 and over | |
| MALES | | | | | | | | | |
| Has had a job(b) within the last 20 years— | | | | | | | | | |
| Professional and technical | * | 4.4 | 4.5 | * | * | 4.2 | 17.2 | 38.1 | 72.9 |
| Administrative, executive and managerial | * | * | * | * | 4.4 | 6.9 | 15.7 | 45.6 | 75.3 |
| Clerical workers | * | 4.0 | * | * | * | 7.2 | 18.3 | 38.0 | 74.8 |
| Sales workers | 11.5 | 3.1 | * | 4.1 | * | 4.3 | 9.4 | 28.2 | 64.6 |
| Farmers, fishermen, timbergetters, etc. | * | 3.7 | * | 3.0 | 6.0 | 4.5 | 11.2 | 55.5 | 87.9 |
| Transport and communication | * | * | * | 4.0 | 4.2 | 6.5 | 16.0 | 42.5 | 79.1 |
| Tradesmen, production-process workers and labourers n.e.c. and miners, etc. | 16.4 | 16.5 | 19.4 | 22.0 | 30.5 | 27.1 | 74.9 | 213.2 | 420.0 |
| Service, sport and recreation | 3.6 | 3.3 | 4.5 | * | 4.5 | 4.3 | 14.6 | 35.6 | 72.8 |
| Total | 37.3 | 37.2 | 37.3 | 40.8 | 56.0 | 65.1 | 177.3 | 496.6 | 947.6 |
| Has not had a job(b) within the last 20 years | * | * | * | * | * | * | * | 41.1 | 45.6 |
| Has never had a job(b) | 204.6 | 19.9 | 5.3 | 3.8 | * | * | * | * | 237.7 |
| Total | 242.0 | 57.1 | 42.6 | 44.9 | 57.5 | 67.2 | 179.9 | 539.7 | 1,230.9 |
| FEMALES | | | | | | | | | |
| Has had a job(b) within the last 20 years— | | | | | | | | | |
| Professional and technical | * | 13.9 | 79.6 | 44.0 | 20.1 | 12.3 | 11.2 | 28.4 | 211.3 |
| Administrative, executive and managerial | * | * | 7.3 | 4.6 | 10.0 | 5.7 | 5.6 | 13.2 | 46.7 |
| Clerical workers | 9.9 | 37.6 | 202.6 | 108.8 | 42.0 | 33.0 | 37.3 | 50.2 | 521.6 |
| Sales workers | 19.0 | 33.0 | 65.8 | 48.3 | 32.6 | 19.5 | 24.0 | 36.1 | 278.2 |
| Farmers, etc. | * | 4.4 | 11.5 | 10.5 | 8.5 | 5.2 | 8.7 | 11.5 | 62.5 |
| Transport and communication | * | * | 9.9 | 8.1 | 5.0 | 3.2 | 3.3 | 3.6 | 35.5 |
| Tradeswomen, production-process workers and labourers n.e.c. and miners, etc. | 6.5 | 26.9 | 73.1 | 58.4 | 58.4 | 30.4 | 32.9 | 38.8 | 325.4 |
| Service, sport and recreation | 8.6 | 30.9 | 87.7 | 63.3 | 55.8 | 40.8 | 45.3 | 69.8 | 402.3 |
| Total | 48.1 | 149.3 | 537.6 | 346.1 | 232.4 | 150.2 | 168.3 | 251.6 | 1,883.5 |
| Has not had a job(b) within the last 20 years | * | * | * | 40.2 | 102.8 | 85.4 | 103.4 | 358.0 | 689.9 |
| Has never had a job(b) | 194.0 | 29.1 | 21.0 | 24.7 | 26.4 | 22.6 | 35.3 | 155.1 | 508.2 |
| Total | 242.0 | 178.4 | 558.7 | 411.0 | 361.6 | 258.2 | 307.0 | 764.7 | 3,081.6 |
| PERSONS | | | | | | | | | |
| Has had a job(b) within the last 20 years— | | | | | | | | | |
| Professional and technical | * | 18.3 | 84.1 | 45.4 | 22.8 | 16.6 | 28.4 | 66.5 | 284.2 |
| Administrative, executive and managerial | * | * | 7.7 | 6.6 | 14.4 | 12.6 | 21.3 | 58.8 | 122.0 |
| Clerical workers | 11.2 | 41.5 | 205.3 | 110.5 | 43.8 | 40.2 | 55.6 | 88.2 | 596.4 |
| Sales workers | 30.5 | 36.0 | 67.7 | 52.5 | 34.6 | 23.8 | 33.4 | 64.3 | 342.8 |
| Farmers, fishermen, timbergetters, etc. | 5.1 | 8.1 | 12.8 | 13.6 | 14.5 | 9.7 | 19.8 | 67.0 | 150.4 |
| Transport and communication | * | 4.4 | 12.5 | 12.1 | 9.2 | 9.7 | 19.4 | 46.0 | 114.6 |
| Tradesmen, production-process workers and labourers n.e.c. and miners, etc. | 22.8 | 43.5 | 92.5 | 80.4 | 89.0 | 57.5 | 107.7 | 252.0 | 745.5 |
| Service, sport and recreation | 12.3 | 34.1 | 92.3 | 65.8 | 60.3 | 45.1 | 60.0 | 105.4 | 475.2 |
| Total | 85.4 | 186.5 | 574.9 | 386.9 | 288.4 | 215.2 | 345.6 | 748.2 | 2,831.1 |
| Has not had a job(b) within the last 20 years | * | * | * | 40.5 | 103.0 | 87.1 | 105.5 | 399.2 | 735.5 |
| Has never had a job(b) | 398.6 | 49.0 | 26.3 | 28.5 | 27.7 | 23.0 | 35.8 | 157.0 | 745.9 |
| Total | 484.0 | 235.5 | 601.3 | 455.9 | 419.1 | 325.4 | 486.9 | 1,304.4 | 4,312.5 |

(a) Excludes students boarding at school, some patients in hospitals and sanatoria and inmates of reformatories, jails, etc. (b) Paid employment, full-time or part-time, for two weeks or more in any job or business.

TABLE 3. PERSONS NOT IN THE LABOUR FORCE(a) : OCCUPATION IN LAST JOB(b) AND MAIN ACTIVITY, SEPTEMBER 1983 (' 000)

| Occupation in last job(b) | Main activity | | | | | | | Other | Total |
|---|---------------------------|--|-------------------------------------|-----------------|---------------------------|----------------------------------|---|-------|---------|
| | Housewife/ home duties | Attending an educational institution | Retired/ voluntarily inactive | Unpaid leave | Own illness/ injury | Permanently unable to work | Worked in unpaid voluntary job | | |
| MALES | | | | | | | | | |
| Has had a job(b) within the last 20 years— | | | | | | | | | |
| Professional and technical | 3.3 | 9.6 | 48.5 | * | * | * | 4.5 | 3.2 | 72.9 |
| Administrative, executive and managerial | * | * | 63.8 | * | * | * | * | * | 75.3 |
| Clerical workers | * | 6.5 | 58.6 | * | 5.0 | * | * | * | 74.8 |
| Sales workers | * | 14.0 | 39.3 | * | 5.2 | * | * | * | 64.6 |
| Farmers, fishermen, timbergetters, etc. | * | 4.7 | 63.1 | * | 8.5 | 5.7 | * | * | 87.9 |
| Transport and communication | * | * | 54.7 | * | 11.3 | 3.4 | * | * | 79.1 |
| Tradesmen, production-process workers and labourers n.e.c. and miners, etc. | 16.0 | 24.1 | 273.4 | * | 66.9 | 21.3 | 5.1 | 12.0 | 420.0 |
| Service, sport and recreation | * | 8.6 | 46.7 | * | 7.8 | 3.8 | * | * | 72.8 |
| Total | 31.2 | 70.5 | 648.1 | 3.4 | 110.1 | 39.9 | 20.1 | 24.2 | 947.6 |
| Has not had a job(b) within the last 20 years | * | * | 34.4 | * | * | 6.0 | * | * | 45.6 |
| Has never had a job(b) | * | 218.0 | 4.0 | * | 4.5 | 6.9 | * | * | 237.7 |
| Total | 34.3 | 288.6 | 686.6 | 3.4 | 117.3 | 52.8 | 21.3 | 26.7 | 1,230.9 |
| FEMALES | | | | | | | | | |
| Has had a job(b) within the last 20 years— | | | | | | | | | |
| Professional and technical | 177.1 | 8.2 | 8.8 | * | 3.8 | * | 7.3 | * | 211.3 |
| Administrative, executive and managerial | 38.4 | * | 4.8 | * | * | * | * | * | 46.7 |
| Clerical workers | 468.4 | 17.7 | 14.0 | * | 7.1 | * | 9.5 | 3.4 | 521.6 |
| Sales workers | 242.9 | 16.3 | 9.6 | * | * | * | * | * | 278.2 |
| Farmers, etc. | 56.0 | * | 3.1 | * | * | * | * | * | 62.5 |
| Transport and communication | 31.9 | * | * | * | * | * | * | * | 35.5 |
| Tradeswomen, production-process workers and labourers n.e.c. and miners, etc. | 296.1 | 3.2 | 13.5 | * | 6.9 | * | * | * | 325.4 |
| Service, sport and recreation | 355.3 | 9.2 | 18.9 | * | 7.1 | 3.5 | 4.2 | 3.5 | 402.3 |
| Total | 1,666.2 | 56.6 | 74.5 | 4.4 | 30.9 | 9.5 | 27.4 | 14.1 | 1,883.5 |
| Has not had a job(b) within the last 20 years | 601.4 | * | 47.9 | * | 9.9 | 14.3 | 11.8 | 4.4 | 689.9 |
| Has never had a job(b) | 262.3 | 199.6 | 22.4 | * | 5.6 | 15.7 | * | * | 508.2 |
| Total | 2,529.9 | 256.3 | 144.8 | 4.4 | 46.5 | 39.5 | 40.9 | 19.4 | 3,081.6 |
| PERSONS | | | | | | | | | |
| Has had a job(b) within the last 20 years— | | | | | | | | | |
| Professional and technical | 180.4 | 17.8 | 57.4 | * | 6.3 | * | 11.8 | 6.0 | 284.2 |
| Administrative, executive and managerial | 40.3 | * | 68.6 | * | 4.4 | * | 3.3 | * | 122.0 |
| Clerical workers | 469.5 | 24.2 | 72.6 | * | 12.2 | * | 11.0 | 4.1 | 596.4 |
| Sales workers | 244.6 | 30.3 | 48.9 | * | 8.1 | * | 4.1 | 3.4 | 342.8 |
| Farmers, fishermen, timbergetters, etc. | 58.2 | 6.2 | 66.2 | * | 9.7 | 5.9 | * | * | 150.4 |
| Transport and communication | 34.9 | 3.3 | 56.5 | * | 11.6 | 3.4 | * | * | 114.6 |
| Tradesmen, production-process workers and labourers n.e.c. and miners, etc. | 312.1 | 27.2 | 287.0 | * | 73.8 | 23.6 | 6.6 | 13.3 | 745.5 |
| Service, sport and recreation | 357.3 | 17.8 | 65.5 | * | 15.0 | 7.3 | 6.4 | 5.1 | 475.2 |
| Total | 1,697.4 | 127.1 | 722.6 | 7.8 | 141.0 | 49.4 | 47.6 | 38.3 | 2,831.1 |
| Has not had a job(b) within the last 20 years | 603.6 | * | 82.3 | * | 12.7 | 20.4 | 11.9 | 4.4 | 735.5 |
| Has never had a job(b) | 263.2 | 417.7 | 26.4 | * | 10.1 | 22.6 | * | 3.4 | 745.9 |
| Total | 2,564.1 | 544.9 | 831.3 | 7.8 | 163.8 | 92.3 | 62.1 | 46.1 | 4,312.5 |

(a) Excludes students boarding at school, some patients in hospitals and sanatoria and inmates of reformatories, jails, etc. (b) Paid employment, full-time or part-time, for two weeks or more in any job or business.

TABLE 4. PERSONS NOT IN THE LABOUR FORCE(a) : WHETHER WANTS TO WORK, WHETHER AVAILABLE TO START WORK WITHIN FOUR WEEKS AND REASON FOR LEAVING LAST JOB(a), SEPTEMBER 1983 (' 000)

| Reason for leaving last job(b) | Wants to work | | | Does not want to work | Total |
|--|--------------------------|---------------------------|----------------|-----------------------|----------------|
| | Available to start(c)(d) | Not available to start(c) | Total | | |
| MALES | | | | | |
| Dismissed, retrenched | 23.8 | 6.7 | 30.4 | 47.0 | 77.4 |
| Seasonal or temporary job; returned to studies | 16.9 | 13.7 | 30.6 | 45.2 | 75.7 |
| Retired/did not want to work any longer | 22.2 | * | 24.9 | 490.0 | 514.9 |
| Unsatisfactory work arrangements | 7.5 | * | 9.1 | 8.1 | 17.1 |
| Own ill health or injury | 22.0 | 18.4 | 40.4 | 220.5 | 260.9 |
| Travel, changed residence, spouse transferred | 4.1 | * | 5.5 | 10.8 | 16.3 |
| Other reasons(e) | 6.5 | * | 8.2 | 17.4 | 25.6 |
| Never had a job(b) | 36.7 | 36.6 | 73.3 | 164.4 | 237.7 |
| Not asked(f) | * | * | 5.2 | * | 5.2 |
| Total | 142.0 | 85.6 | 227.6 | 1,003.3 | 1,230.9 |
| FEMALES | | | | | |
| Dismissed, retrenched | 57.7 | 11.5 | 69.2 | 112.8 | 182.0 |
| Seasonal or temporary job; returned to studies | 62.5 | 18.2 | 80.7 | 107.6 | 188.3 |
| Retired/did not want to work any longer | 22.0 | * | 24.7 | 378.3 | 403.0 |
| Unsatisfactory work arrangements | 32.1 | 6.0 | 38.1 | 39.3 | 77.4 |
| Own ill health or injury | 32.8 | 13.3 | 46.1 | 179.2 | 225.3 |
| Left to get married | 48.9 | 13.3 | 62.2 | 468.1 | 530.3 |
| Pregnancy/to have children | 159.8 | 56.2 | 216.0 | 316.4 | 532.4 |
| To look after family or other persons | 39.3 | 11.1 | 50.3 | 155.3 | 205.6 |
| Travel, changed residence, spouse transferred | 53.3 | 11.2 | 64.6 | 97.6 | 162.2 |
| Other reasons | 12.8 | * | 15.6 | 29.5 | 45.0 |
| Never had a job(b) | 61.8 | 31.1 | 92.9 | 415.4 | 508.2 |
| Not asked(f) | 8.7 | 13.1 | 21.8 | * | 21.8 |
| Total | 591.7 | 190.5 | 782.2 | 2,299.4 | 3,081.6 |
| PERSONS | | | | | |
| Dismissed, retrenched | 81.5 | 18.2 | 99.6 | 159.8 | 259.4 |
| Seasonal or temporary job; returned to studies | 79.4 | 31.8 | 111.3 | 152.7 | 264.0 |
| Retired/did not want to work any longer | 44.2 | 5.4 | 49.6 | 868.3 | 917.9 |
| Unsatisfactory work arrangements | 39.7 | 7.5 | 47.2 | 47.4 | 94.5 |
| Own ill health or injury | 54.8 | 31.7 | 86.6 | 399.6 | 486.2 |
| Left to get married | 48.9 | 13.3 | 62.2 | 468.3 | 530.4 |
| Pregnancy/to have children | 159.8 | 56.2 | 216.0 | 316.9 | 532.9 |
| To look after family or other persons | 40.6 | 11.9 | 52.5 | 162.6 | 215.1 |
| Travel, changed residence, spouse transferred | 57.4 | 12.7 | 70.1 | 108.4 | 178.5 |
| Other reasons | 18.0 | 3.6 | 21.6 | 38.9 | 60.5 |
| Never had a job(b) | 98.5 | 67.7 | 166.2 | 579.8 | 745.9 |
| Not asked(f) | 10.9 | 16.0 | 27.0 | * | 27.0 |
| Total | 733.7 | 276.2 | 1,009.8 | 3,302.7 | 4,312.5 |

(a) Excludes students boarding at school, some patients in hospitals and sanatoria and inmates of reformatories, jails, etc. (b) Paid employment, full-time or part-time, for two weeks or more in any job or business. (c) Within four weeks. (d) Includes persons who don't know whether available to start work within four weeks. (e) Includes reasons not shown separately. (f) Persons who had a job but, up to the end of the survey week, had been away from work without pay for four weeks or longer and had not been actively looking for work.

**TABLE 5. PERSONS NOT IN THE LABOUR FORCE WHO HAVE HAD A JOB(a) :
TIME SINCE LAST JOB(a) AND REASON FOR LEAVING LAST JOB(a),
SEPTEMBER 1983
(' 000)**

| Reason for leaving last job(a) | Time since last job(a) | | | | | | | Total |
|--|------------------------|---------------------------------|--------------------------------|---------------------------------|----------------------------------|-----------------------------------|----------------------|----------------|
| | Under 6 months | 6 months and under 1 year | 1 year and under 3 years | 3 years and under 5 years | 5 years and under 10 years | 10 years and under 20 years | 20 years and over | |
| MALES | | | | | | | | |
| Dismissed, retrenched | 12.8 | 14.0 | 17.0 | 12.9 | 16.1 | 4.3 | * | 77.4 |
| Seasonal or temporary job; returned to studies | 16.5 | 28.8 | 17.8 | 5.5 | 4.6 | * | * | 75.7 |
| Retired/did not want to work any longer | 20.4 | 23.1 | 82.7 | 84.6 | 156.6 | 120.2 | 27.4 | 514.9 |
| Unsatisfactory work arrangements | 4.8 | * | 4.1 | 5.3 | | * | * | 17.1 |
| Own ill health or injury | 12.9 | 15.9 | 44.6 | 48.1 | 77.3 | 47.4 | 14.7 | 260.9 |
| Travel, changed residence, spouse transferred | 4.5 | | 4.3 | | 4.6 | * | * | 16.3 |
| Other reasons(b) | 4.2 | 5.2 | 4.4 | 4.4 | 5.3 | * | * | 25.6 |
| Not asked(c) | 5.2 | * | * | * | * | * | * | 5.2 |
| Total | 79.0 | 88.5 | 173.0 | 160.3 | 267.0 | 179.9 | 45.6 | 993.2 |
| FEMALES | | | | | | | | |
| Dismissed, retrenched | 17.9 | 19.0 | 36.3 | 24.3 | 42.5 | 25.1 | 17.0 | 182.0 |
| Seasonal or temporary job; returned to studies | 35.1 | 33.6 | 46.6 | 18.9 | 23.0 | 17.4 | 13.8 | 188.3 |
| Retired/did not want to work any longer | 12.7 | 15.3 | 53.7 | 46.4 | 102.3 | 102.8 | 69.7 | 403.0 |
| Unsatisfactory work arrangements | 7.8 | 7.1 | 23.5 | 11.5 | 14.2 | 9.4 | 3.8 | 77.4 |
| Own ill health or injury | 11.4 | 10.9 | 36.5 | 29.0 | 57.0 | 53.2 | 27.4 | 225.3 |
| Left to get married | 3.3 | | 9.4 | 12.3 | 36.3 | 70.5 | 398.6 | 530.3 |
| Pregnancy/to have children | 25.0 | 29.6 | 98.7 | 82.1 | 124.5 | 97.8 | 74.8 | 532.4 |
| To look after family or other persons | 9.4 | 8.9 | 25.8 | 18.2 | 43.7 | 41.8 | 57.8 | 205.6 |
| Travel, changed residence, spouse transferred | 7.2 | 9.5 | 32.8 | 24.4 | 38.5 | 28.6 | 21.2 | 162.2 |
| Other reasons | 5.3 | * | 9.1 | 5.7 | 8.7 | 7.9 | 5.8 | 45.0 |
| Not asked(c) | 21.8 | * | * | * | * | * | * | 21.8 |
| Total | 154.8 | 138.5 | 372.5 | 272.7 | 490.7 | 454.4 | 689.9 | 2,573.4 |
| PERSONS | | | | | | | | |
| Dismissed, retrenched | 30.7 | 33.0 | 53.3 | 37.3 | 58.6 | 29.4 | 17.3 | 259.4 |
| Seasonal or temporary job; returned to studies | 51.6 | 62.4 | 64.4 | 24.4 | 27.5 | 19.6 | 14.0 | 264.0 |
| Retired/did not want to work any longer | 33.1 | 38.4 | 136.5 | 131.0 | 258.8 | 223.0 | 97.0 | 917.9 |
| Unsatisfactory work arrangements | 12.6 | 8.5 | 27.7 | 14.2 | 16.8 | 10.1 | 4.5 | 94.5 |
| Own ill health or injury | 24.3 | 26.8 | 81.1 | 77.1 | 134.3 | 100.6 | 42.1 | 486.2 |
| Left to get married | 3.3 | | 9.4 | 12.3 | 36.3 | 70.5 | 398.7 | 530.4 |
| Pregnancy/to have children | 25.0 | 29.6 | 98.7 | 82.1 | 124.5 | 97.8 | 75.3 | 532.9 |
| To look after family or other persons | 9.9 | 8.9 | 27.6 | 20.6 | 46.4 | 43.3 | 58.4 | 215.1 |
| Travel, changed residence, spouse transferred | 9.4 | 11.7 | 35.1 | 26.4 | 43.1 | 31.3 | 21.5 | 178.5 |
| Other reasons | 9.0 | 5.6 | 11.7 | 7.7 | 11.3 | 8.6 | 6.7 | 60.5 |
| Not asked(c) | 27.0 | * | * | * | * | * | * | 27.0 |
| Total | 233.8 | 226.9 | 545.4 | 433.0 | 757.7 | 634.3 | 735.5 | 3,566.5 |

(a) Paid employment, full-time or part-time, for two weeks or more in any job or business. (b) Includes reasons not shown separately. (c) Persons who have a job but, up to the end of the survey week, had been away from work without pay for four weeks or longer and had not been actively looking for work.

**TABLE 6. PERSONS NOT IN THE LABOUR FORCE WHO HAVE HAD A JOB(a) : STATUS OF WORKER,
FULL-TIME PART-TIME STATUS IN LAST JOB(a) AND REASON FOR LEAVING LAST JOB(a)
SEPTEMBER 1983
(' 000)**

| Reason for leaving last job(a) | Status of worker last job(a) | | | | Full-time part-time status in last job(a) | | | | Total |
|--|------------------------------|---------------|-------------------------|-----------------------|---|--------------|-------------------|------------------------|----------------|
| | Employers | Self-employed | Wage and salary earners | Unpaid family helpers | Full-time | Part-time | Varied/don't know | Last job 20+ years ago | |
| MALES | | | | | | | | | |
| Dismissed, retrenched | * | * | 74.1 | * | 64.0 | 13.0 | * | * | 77.4 |
| Seasonal or temporary job; returned to studies | * | 3.7 | 71.1 | * | 43.4 | 31.1 | * | * | 75.7 |
| Retired/did not want to work any longer | 26.0 | 50.4 | 410.9 | * | 461.1 | 25.8 | * | 27.4 | 514.9 |
| Unsatisfactory work arrangements | * | * | 13.1 | * | 12.6 | 3.6 | * | * | 17.1 |
| Own ill health or injury | 8.9 | 29.3 | 208.0 | * | 230.6 | 14.5 | * | 14.7 | 260.9 |
| Travel, changed residence, spouse transferred | * | * | 14.0 | * | 11.3 | 4.7 | * | * | 16.3 |
| Other reasons(b) | 4.1 | 3.8 | 15.6 | * | 20.2 | 3.3 | * | * | 25.6 |
| Not asked(c) | * | * | 5.2 | * | 4.4 | * | * | * | 5.2 |
| Total | 41.2 | 93.4 | 812.1 | * | 847.6 | 96.6 | 3.4 | 45.6 | 993.2 |
| FEMALES | | | | | | | | | |
| Dismissed, retrenched | * | 4.4 | 157.9 | * | 86.8 | 77.0 | * | 17.0 | 182.0 |
| Seasonal or temporary job; returned to studies | * | 4.1 | 168.1 | * | 64.6 | 106.5 | 3.4 | 13.8 | 188.3 |
| Retired/did not want to work any longer | 18.0 | 24.6 | 290.3 | * | 208.0 | 123.7 | * | 69.7 | 403.0 |
| Unsatisfactory work arrangements | * | 6.1 | 65.4 | * | 38.3 | 34.7 | * | 3.8 | 77.4 |
| Own ill health or injury | 4.6 | 8.7 | 184.7 | * | 131.4 | 63.5 | 3.0 | 27.4 | 225.3 |
| Left to get married | * | * | 129.5 | * | 121.6 | 10.1 | * | 398.6 | 530.3 |
| Pregnancy/to have children | * | 3.9 | 451.7 | * | 374.8 | 81.0 | * | 74.8 | 532.4 |
| To look after family or other persons | 3.8 | 6.3 | 136.9 | * | 88.3 | 58.2 | * | 57.8 | 205.6 |
| Travel, changed residence, spouse transferred | * | 6.4 | 131.4 | * | 86.3 | 54.1 | * | 21.2 | 162.2 |
| Other reasons | 6.6 | 8.3 | 23.6 | * | 23.1 | 15.3 | * | 5.8 | 45.0 |
| Not asked(c) | * | * | 21.8 | * | 13.4 | 6.9 | * | * | 21.8 |
| Total | 43.9 | 74.2 | 1,761.2 | 4.2 | 1,236.5 | 630.9 | 16.1 | 689.9 | 2,573.4 |
| PERSONS | | | | | | | | | |
| Dismissed, retrenched | * | 7.2 | 232.1 | * | 150.8 | 90.0 | * | 17.3 | 259.4 |
| Seasonal or temporary job; returned to studies | * | 7.8 | 239.2 | * | 108.1 | 137.6 | 4.3 | 14.0 | 264.0 |
| Retired/did not want to work any longer | 44.1 | 75.0 | 701.2 | * | 669.1 | 149.5 | * | 97.0 | 917.9 |
| Unsatisfactory work arrangements | 3.1 | 8.3 | 78.6 | * | 50.9 | 38.3 | * | 4.5 | 94.5 |
| Own ill health or injury | 13.5 | 37.9 | 392.7 | * | 362.0 | 78.0 | 4.1 | 42.1 | 486.2 |
| Left to get married | * | * | 129.5 | * | 121.6 | 10.1 | * | 398.7 | 530.4 |
| Pregnancy/to have children | * | 3.9 | 451.7 | * | 374.8 | 81.0 | * | 75.3 | 532.9 |
| To look after family or other persons | 4.8 | 7.2 | 143.8 | * | 96.4 | 59.1 | * | 58.4 | 215.1 |
| Travel, changed residence, spouse transferred | 3.5 | 7.7 | 145.4 | * | 97.5 | 58.8 | * | 21.5 | 178.5 |
| Other reasons | 9.7 | 11.1 | 32.3 | * | 35.2 | 17.8 | * | 6.7 | 60.5 |
| Not asked(c) | * | * | 27.0 | * | 17.8 | 7.5 | * | * | 27.0 |
| Total | 85.1 | 167.6 | 2,573.3 | 5.1 | 2,084.1 | 727.5 | 19.4 | 735.5 | 3,566.5 |

(a) Paid employment, full-time or part-time, for two weeks or more in any job or business. (b) Includes reasons not shown separately. (c) Persons who have a job but, up to the end of the survey week, had been away from work without pay for four weeks or longer and had not been actively looking for work.

TABLE 7. PERSONS NOT IN THE LABOUR FORCE WHO HAVE HAD A JOB(a): TIME SINCE LAST JOB(a) AND WHETHER LOOKED FOR WORK IN THE LAST TWELVE MONTHS, SEPTEMBER 1983 ('000)

| <i>Time since last job(a)</i> | <i>Has looked for work in the last 12 months(b)</i> | | | | <i>Total</i> | <i>Has not looked in the last 12 months</i> | <i>Total</i> |
|-------------------------------|---|------------------------------------|-------------------------------------|--------------------------------------|--------------|---|----------------|
| | <i>Less than 5 weeks ago</i> | <i>5 and less than 8 weeks ago</i> | <i>8 and less than 13 weeks ago</i> | <i>13 and less than 52 weeks ago</i> | | | |
| MALES | | | | | | | |
| Under 6 months | 8.6 | 4.1 | * | * | 14.1 | 64.9 | 79.0 |
| 6 months and under 1 year | 8.9 | 4.6 | 3.3 | 3.2 | 20.2 | 68.3 | 88.5 |
| 1 year and under 3 years | 5.0 | } 4.2 { | 3.1 | 6.4 | 16.9 | 156.0 | 173.0 |
| 3 years and under 10 years | 4.0 | | * | * | 8.8 | 418.4 | 427.2 |
| 10 years and under 20 years | * | * | * | * | * | 179.2 | 179.9 |
| 20 years and over | * | * | * | * | * | 45.5 | 45.6 |
| <i>Total</i> | <i>26.6</i> | <i>12.9</i> | <i>8.1</i> | <i>13.2</i> | <i>60.8</i> | <i>932.4</i> | <i>993.2</i> |
| FEMALES | | | | | | | |
| Under 6 months | 8.6 | 3.7 | * | * | 14.4 | 140.4 | 154.8 |
| 6 months and under 1 year | 7.0 | 4.6 | 5.0 | 7.4 | 24.1 | 114.4 | 138.5 |
| 1 year and under 3 years | 14.5 | 9.5 | 10.9 | 14.9 | 49.8 | 322.6 | 372.5 |
| 3 years and under 10 years | 12.8 | 11.6 | 8.6 | 18.1 | 51.1 | 712.3 | 763.4 |
| 10 years and under 20 years | 3.1 | 4.3 | * | 5.5 | 14.9 | 439.5 | 454.4 |
| 20 years and over | * | * | * | * | 4.1 | 685.8 | 689.9 |
| <i>Total</i> | <i>47.8</i> | <i>34.6</i> | <i>28.0</i> | <i>48.0</i> | <i>158.4</i> | <i>2,415.0</i> | <i>2,573.4</i> |
| PERSONS | | | | | | | |
| Under 6 months | 17.1 | 7.7 | * | * | 28.5 | 205.3 | 233.8 |
| 6 months and under 1 year | 16.0 | 9.3 | 8.3 | 10.6 | 44.2 | 182.7 | 226.9 |
| 1 year and under 3 years | 19.5 | 12.0 | 13.9 | 21.3 | 66.7 | 478.7 | 545.4 |
| 3 years and under 10 years | 16.8 | 13.4 | 9.6 | 20.2 | 59.9 | 1,130.7 | 1,190.6 |
| 10 years and under 20 years | 3.1 | 4.3 | * | 6.2 | 15.6 | 618.7 | 634.3 |
| 20 years and over | * | * | * | * | 4.2 | 731.3 | 735.5 |
| <i>Total</i> | <i>74.3</i> | <i>47.5</i> | <i>36.1</i> | <i>61.2</i> | <i>219.1</i> | <i>3,347.4</i> | <i>3,566.5</i> |

(a) Paid employment, full-time or part-time for two weeks or more in any job or business. (b) Persons who have left a job in the last twelve months are only asked whether they had looked for work since that job.

TABLE 8. PERSONS NOT IN THE LABOUR FORCE WHO WANTED TO WORK: AGE, INTENTION TO LOOK FOR WORK(a) AND TYPE OF WORK PREFERRED, SEPTEMBER 1983 ('000)

| Intention to look for work(a) and type of work preferred | Age group (years) | | | | | | | | Total |
|---|-------------------|--------------|--------------|--------------|--------------|-------------|-------------|----------------|----------------|
| | 15-19 | 20-24 | 25-34 | 35-44 | 45-54 | 55-59 | 60-64 | 65 and over | |
| MALES | | | | | | | | | |
| Might look(a) | 51.9 | 14.3 | 12.1 | 14.3 | 13.3 | 8.4 | 7.6 | 6.3 | 128.3 |
| Would not look/does not know(a) | 16.4 | 3.2 | 3.5 | 3.5 | * | 5.5 | 12.1 | 15.9 | 62.6 |
| Not asked(b) | 19.1 | 5.5 | 5.8 | * | * | * | * | * | 36.7 |
| Prefer to work full-time | 57.2 | 16.7 | 17.4 | 15.6 | 10.2 | 7.2 | 4.1 | * | 130.4 |
| Prefer to work part-time | 28.4 | 5.4 | 3.0 | 4.0 | 5.1 | 6.2 | 14.5 | 18.4 | 85.0 |
| No preference | * | * | * | * | * | * | * | * | 12.2 |
| Total | 87.5 | 23.1 | 21.4 | 20.7 | 16.9 | 14.9 | 21.0 | 22.3 | 227.6 |
| MARRIED FEMALES | | | | | | | | | |
| Might look(a) | 3.6 | 26.7 | 105.7 | 80.3 | 34.9 | 8.8 | * | * | 263.9 |
| Would not look/does not know(a) | * | 30.7 | 123.3 | 67.4 | 35.6 | 14.0 | 9.3 | 5.0 | 287.7 |
| Not asked(b) | * | 3.8 | 19.6 | 10.9 | * | * | * | * | 38.6 |
| Prefer to work full-time | * | 10.4 | 28.8 | 17.2 | 10.4 | * | * | * | 72.3 |
| Prefer to work part-time | 4.2 | 47.5 | 211.0 | 136.7 | 57.4 | 20.6 | 11.0 | 5.4 | 493.7 |
| No preference | * | 3.3 | 8.8 | 4.8 | 4.9 | * | * | * | 24.2 |
| Total | 6.9 | 61.2 | 248.6 | 158.7 | 72.7 | 23.7 | 12.3 | 6.2 | 590.3 |
| NOT MARRIED FEMALES | | | | | | | | | |
| Might look(a) | 58.3 | 14.1 | 15.7 | 11.0 | 6.0 | 4.5 | 3.4 | * | 114.0 |
| Would not look/does not know(a) | 16.6 | 5.9 | 9.6 | 6.7 | 6.0 | 4.6 | 5.2 | 6.6 | 61.2 |
| Not asked(b) | 10.4 | 4.0 | * | * | * | * | * | * | 16.8 |
| Prefer to work full-time | 46.5 | 9.6 | 9.5 | 4.3 | * | * | * | * | 75.4 |
| Prefer to work part-time | 36.6 | 13.5 | 15.8 | 12.5 | 8.7 | 7.7 | 6.8 | 6.5 | 108.1 |
| No preference | * | * | * | * | * | * | * | * | 8.5 |
| Total | 85.4 | 24.1 | 26.3 | 18.5 | 12.2 | 9.2 | 8.8 | 7.6 | 192.0 |
| ALL FEMALES | | | | | | | | | |
| Might look(a) | 61.9 | 40.8 | 121.4 | 91.3 | 40.9 | 13.3 | 6.2 | * | 377.9 |
| Would not look/does not know(a) | 19.1 | 36.6 | 132.9 | 74.2 | 41.6 | 18.6 | 14.4 | 11.5 | 348.9 |
| Not asked(b) | 11.3 | 7.8 | 20.6 | 11.7 | * | * | * | * | 55.4 |
| Prefer to work full-time | 48.4 | 20.1 | 38.3 | 21.5 | 12.9 | 3.3 | * | * | 147.8 |
| Prefer to work part-time | 40.8 | 61.0 | 226.8 | 149.2 | 66.1 | 28.2 | 17.7 | 11.9 | 601.8 |
| No preference | 3.1 | 4.2 | 9.9 | 6.5 | 5.9 | * | * | * | 32.7 |
| Total | 92.3 | 85.3 | 274.9 | 177.1 | 84.9 | 32.9 | 21.0 | 13.8 | 782.2 |
| PERSONS | | | | | | | | | |
| Might look(a) | 113.8 | 55.2 | 133.5 | 105.6 | 54.1 | 21.7 | 13.8 | 8.5 | 506.2 |
| Would not look/does not know(a) | 35.5 | 39.8 | 136.4 | 77.7 | 44.1 | 24.1 | 26.6 | 27.4 | 411.6 |
| Not asked(b) | 30.4 | 13.3 | 26.4 | 14.5 | 3.5 | * | * | * | 92.1 |
| Prefer to work full-time | 105.6 | 36.8 | 55.7 | 37.1 | 23.1 | 10.5 | 6.3 | 3.1 | 278.2 |
| Prefer to work part-time | 69.2 | 66.4 | 229.8 | 153.2 | 71.2 | 34.4 | 32.2 | 30.3 | 686.7 |
| No preference | 4.9 | 5.2 | 10.8 | 7.6 | 7.4 | * | 3.5 | * | 44.9 |
| Total | 179.7 | 108.4 | 296.3 | 197.8 | 101.8 | 47.8 | 42.0 | 36.1 | 1,009.8 |

(a) In the next twelve months. (b) Comprises persons who had a job to go to, persons who took active steps to find work and persons who had a job but, up to the end of the survey week, had been away without pay for four weeks or longer and had not been actively looking for work.

TABLE 9. PERSONS NOT IN THE LABOUR FORCE WHO WANTED TO WORK: INTENTION TO LOOK FOR WORK(a) AND WHETHER AVAILABLE TO START WORK WITHIN FOUR WEEKS, SEPTEMBER 1983 ('000)

| <i>Intention to look for work(a)</i> | <i>Available to start work(b)</i> | | | <i>Not available to start work(b)</i> | <i>Total</i> |
|--------------------------------------|-----------------------------------|--|--------------|---------------------------------------|----------------|
| | <i>Could start</i> | <i>Does not know whether could start</i> | <i>Total</i> | | |
| MALES | | | | | |
| Intending to look | 65.4 | 3.1 | 68.6 | 30.1 | 98.6 |
| Might look | 15.9 | * | 18.2 | 11.5 | 29.7 |
| Would not look | 34.5 | * | 37.0 | 17.9 | 54.9 |
| Does not know | 4.2 | * | 5.3 | * | 7.8 |
| Not asked(c) | 11.3 | * | 13.0 | 23.7 | 36.7 |
| Total | 131.3 | 10.7 | 142.0 | 85.6 | 227.6 |
| FEMALES | | | | | |
| Intending to look | 204.1 | 7.5 | 211.6 | 49.3 | 260.9 |
| Might look | 86.6 | 7.8 | 94.4 | 22.6 | 117.0 |
| Would not look | 211.5 | 14.5 | 226.0 | 88.4 | 314.5 |
| Does not know | 24.9 | 3.6 | 28.5 | 6.0 | 34.5 |
| Not asked(c) | 29.7 | * | 31.1 | 24.3 | 55.4 |
| Total | 556.8 | 34.9 | 591.7 | 190.5 | 782.2 |
| PERSONS | | | | | |
| Intending to look | 269.5 | 10.6 | 280.2 | 79.4 | 359.5 |
| Might look | 102.5 | 10.1 | 112.6 | 34.0 | 146.7 |
| Would not look | 246.0 | 17.0 | 263.0 | 106.4 | 369.3 |
| Does not know | 29.1 | 4.7 | 33.8 | 8.5 | 42.2 |
| Not asked(c) | 40.9 | 3.2 | 44.1 | 48.0 | 92.1 |
| Total | 688.0 | 45.6 | 733.7 | 276.2 | 1,009.8 |

(a) In the next twelve months. (b) Within four weeks. (c) Comprises persons who had a job to go to, persons who took active steps to find work and persons who had a job but, up to the end of the survey week, had been away from work without pay for four weeks or longer and had not been actively looking for work.

TABLE 10. PERSONS NOT IN THE LABOUR FORCE WHO WANTED TO WORK: TYPE OF WORK PREFERRED AND WHETHER AVAILABLE TO START WORK WITHIN FOUR WEEKS, SEPTEMBER 1983 ('000)

| <i>Type of work preferred</i> | <i>Available to start(a)(b)</i> | | <i>Not available to start(a)</i> | | <i>Total(b)</i> | | |
|-------------------------------|---------------------------------|----------------|----------------------------------|----------------|-----------------|----------------|----------------|
| | <i>Males</i> | <i>Females</i> | <i>Males</i> | <i>Females</i> | <i>Males</i> | <i>Females</i> | <i>Persons</i> |
| Prefer to work full-time | 69.0 | 94.5 | 61.4 | 53.2 | 130.4 | 147.8 | 278.2 |
| Prefer to work part-time | 65.5 | 472.7 | 19.5 | 129.1 | 85.0 | 601.8 | 686.7 |
| No preference | 7.5 | 24.5 | 4.8 | 8.2 | 12.2 | 32.7 | 44.9 |
| Total | 142.0 | 591.7 | 85.6 | 190.5 | 227.6 | 782.2 | 1,009.8 |

(a) Work within four weeks. (b) Includes those persons who don't know whether available to start work within four weeks.

B. PERSONS WITH MARGINAL ATTACHMENT TO THE LABOUR FORCE

TABLE 11. PERSONS WITH MARGINAL ATTACHMENT TO THE LABOUR FORCE, SEPTEMBER 1983

| | Males | Females (' 000) | Persons | Males | Females (per cent) | Persons |
|--|-------|---------------------|---------|-------|-----------------------|---------|
| Marginally attached to the labour force | 162.8 | 602.8 | 765.6 | 100.0 | 100.0 | 100.0 |
| Wanted to work and available to start work within four weeks | 142.0 | 591.7 | 733.7 | 87.2 | 98.2 | 95.8 |
| Were actively looking for work | 7.4 | 14.4 | 21.9 | 4.6 | 2.4 | 2.9 |
| Were not actively looking for work | 134.6 | 577.3 | 711.8 | 82.7 | 95.8 | 93.0 |
| Were actively looking for work but not available to start work within four weeks | 20.8 | 11.1 | 31.9 | 12.8 | 1.8 | 4.2 |

TABLE 12. PERSONS NOT IN THE LABOUR FORCE WHO WANTED TO WORK AND WERE AVAILABLE TO START WORK WITHIN FOUR WEEKS: MAIN REASON FOR NOT ACTIVELY LOOKING FOR WORK AND INTENTION TO LOOK FOR WORK(a), SEPTEMBER 1983 (' 000)

| Main reason for not actively looking for work | Intention to look for work(a) | | | | | Total | | |
|--|-------------------------------|--------------|----------------|---------------|--------------|--------------|--------------|--------------|
| | Intending to look | Might look | Would not look | Does not know | Not asked(b) | Males | Females | Persons |
| Had a job to go to | .. | .. | .. | .. | 11.4 | 3.3 | 8.0 | 11.4 |
| Personal reasons | 114.7 | 39.4 | 79.8 | 9.9 | .. | 90.7 | 153.1 | 243.8 |
| Own ill health, disability, pregnancy | 28.6 | 11.4 | 19.4 | * | .. | 25.9 | 36.1 | 61.9 |
| Attending an educational institution | 54.7 | 10.7 | 15.2 | * | .. | 39.9 | 43.0 | 82.9 |
| Has no need to work | 11.1 | 9.3 | 28.1 | * | .. | 10.8 | 39.7 | 50.5 |
| Give others a chance | 3.9 | 6.5 | * | * | .. | * | 9.7 | 11.2 |
| Welfare payments/pension may be affected | 7.0 | 3.6 | 9.9 | * | .. | 7.7 | 14.4 | 22.1 |
| Moved house/holidays | 12.3 | * | * | * | .. | 4.9 | 10.2 | 15.2 |
| Family reasons | 83.0 | 45.3 | 132.0 | 16.9 | .. | 3.4 | 273.8 | 277.2 |
| Ill health of other than self | 4.3 | 3.0 | 4.3 | * | .. | * | 12.6 | 13.4 |
| Unable to find suitable childcare/preferred to look after children | 66.7 | 33.8 | 109.9 | 11.9 | .. | * | 220.3 | 222.4 |
| Other family considerations | 12.0 | 8.4 | 17.7 | 3.3 | .. | * | 40.9 | 41.4 |
| Discouraged jobseekers | 54.7 | 20.4 | 38.3 | 4.9 | .. | 26.4 | 91.8 | 118.2 |
| Considered too young or too old by employers | 6.7 | 4.7 | 16.9 | * | .. | 11.1 | 17.9 | 29.0 |
| Language or racial difficulties | * | * | * | * | .. | * | * | * |
| Lacks schooling, training, skills or experience | 3.8 | * | 3.4 | .. | .. | * | 7.2 | 8.4 |
| No jobs in locality or line of work | 21.3 | 6.5 | 9.5 | * | .. | 7.4 | 30.8 | 38.2 |
| No jobs at all | 20.8 | 7.7 | 9.2 | * | .. | 6.2 | 33.5 | 39.7 |
| No jobs in suitable hours | 8.5 | 3.2 | 3.0 | * | .. | * | 14.3 | 15.1 |
| Other reasons | 15.7 | * | 7.5 | * | .. | 7.0 | 20.2 | 27.2 |
| Don't know | 3.6 | * | 3.1 | .. | .. | * | 7.4 | 8.1 |
| Took active steps to find work | .. | .. | .. | .. | 21.9 | 7.4 | 14.4 | 21.9 |
| Not asked(c) | .. | .. | .. | .. | 10.9 | * | 8.7 | 10.9 |
| Total | 280.2 | 112.6 | 263.0 | 33.8 | 44.1 | 142.0 | 591.7 | 733.7 |

(a) In the next 12 months. (b) Comprises persons who had a job to go to, persons who took active steps to find work and persons as defined in footnote (c) following.
(c) Persons who had a job but, up to the end of the survey week, had been away from work without pay for four weeks or longer and had not been actively looking for work.

TABLE 13. PERSONS NOT IN THE LABOUR FORCE WHO WANTED TO WORK AND WERE AVAILABLE TO START WORK WITHIN FOUR WEEKS: INTENTION TO LOOK FOR WORK(a), WHETHER LOOKED FOR WORK IN THE LAST 12 MONTHS AND WORK EXPERIENCE, SEPTEMBER 1983
(' 000)

| | <i>Intention to look for work(a)</i> | | | | | <i>Total</i> |
|--|--------------------------------------|-------------------|-----------------------|----------------------|---------------------|--------------|
| | <i>Intending to look</i> | <i>Might look</i> | <i>Would not look</i> | <i>Does not know</i> | <i>Not asked(b)</i> | |
| MALES | | | | | | |
| Whether looked for work in the last 12 months— | 68.6 | 18.2 | 37.0 | 5.3 | 13.0 | 142.0 |
| Had not looked for work | 39.9 | 14.2 | 33.6 | 4.2 | 4.5 | 96.4 |
| Had looked for work | 28.6 | 4.0 | 3.3 | * | 8.5 | 45.5 |
| Less than 5 weeks ago | 9.0 | * | * | * | 8.2 | 19.5 |
| 5 and less than 8 weeks ago | 9.2 | * | * | * | * | 11.0 |
| 8 and less than 13 weeks ago | 4.1 | * | * | * | * | 5.6 |
| 13 and less than 52 weeks ago | 6.3 | * | * | * | * | 9.4 |
| Work experience— | | | | | | |
| Has never had a job(c) | 22.9 | 4.2 | 6.9 | * | * | 36.7 |
| Has had a job(c) | 45.7 | 14.0 | 30.1 | 4.3 | 11.2 | 105.3 |
| Worked in the last year | 26.3 | 3.8 | 5.6 | * | 9.3 | 46.5 |
| Within the last 6 months | 16.3 | * | * | * | 6.7 | 27.4 |
| 6 to 12 months ago | 10.0 | * | 4.0 | * | * | 19.1 |
| Worked 1 to 3 years ago | 10.6 | 4.7 | 9.1 | * | * | 26.2 |
| Worked 3 to 10 years ago | 8.1 | 4.6 | 13.3 | * | * | 28.6 |
| Worked more than 10 years ago | * | * | * | * | * | 4.0 |
| FEMALES | | | | | | |
| Whether looked for work in the last 12 months— | 211.6 | 94.4 | 226.0 | 28.5 | 31.1 | 591.7 |
| Had not looked for work | 127.9 | 75.1 | 213.4 | 23.1 | 14.4 | 454.0 |
| Had looked for work | 83.7 | 19.3 | 12.6 | 5.4 | 16.8 | 137.8 |
| Less than 5 weeks ago | 23.4 | * | * | * | 15.4 | 44.9 |
| 5 and less than 8 weeks ago | 27.0 | 3.9 | * | * | * | 33.7 |
| 8 and less than 13 weeks ago | 14.2 | 4.4 | * | * | * | 22.2 |
| 13 and less than 52 weeks ago | 19.1 | 8.1 | 6.8 | * | * | 37.0 |
| Work experience— | | | | | | |
| Has never had a job(c) | 31.8 | 10.0 | 15.2 | 3.1 | * | 61.8 |
| Has had a job(c) | 179.8 | 84.4 | 210.8 | 25.4 | 29.5 | 529.9 |
| Worked in the last year | 47.5 | 13.2 | 21.0 | * | 19.3 | 103.7 |
| Within the last 6 months | 24.6 | 5.9 | 8.7 | * | 16.2 | 56.5 |
| 6 to 12 months ago | 22.9 | 7.3 | 12.3 | * | 3.0 | 47.2 |
| Worked 1 to 3 years ago | 54.2 | 20.3 | 41.5 | 5.4 | 4.8 | 126.2 |
| Worked 3 to 10 years ago | 56.0 | 32.3 | 94.8 | 10.7 | 4.5 | 198.4 |
| Worked more than 10 years ago | 22.1 | 18.6 | 53.5 | 6.6 | * | 101.6 |
| PERSONS | | | | | | |
| Whether looked for work in the last 12 months— | 280.2 | 112.6 | 263.0 | 33.8 | 44.1 | 733.7 |
| Had not looked for work | 167.8 | 89.3 | 247.0 | 27.3 | 18.9 | 550.4 |
| Had looked for work | 112.3 | 23.3 | 15.9 | 6.4 | 25.3 | 183.3 |
| Less than 5 weeks ago | 32.3 | 3.8 | 3.2 | * | 23.6 | 64.4 |
| 5 and less than 8 weeks ago | 36.2 | 5.0 | * | * | * | 44.6 |
| 8 and less than 13 weeks ago | 18.4 | 5.4 | * | * | * | 27.9 |
| 13 and less than 52 weeks ago | 25.4 | 9.1 | 8.2 | 3.0 | * | 46.4 |
| Work experience— | | | | | | |
| Has never had a job(c) | 54.7 | 14.2 | 22.1 | 4.1 | 3.4 | 98.5 |
| Has had a job(c) | 225.5 | 98.4 | 240.9 | 29.7 | 40.7 | 635.2 |
| Worked in the last year | 73.8 | 17.0 | 26.6 | 4.2 | 28.6 | 150.2 |
| Within the last 6 months | 41.0 | 8.1 | 10.4 | * | 22.9 | 83.9 |
| 6 to 12 months ago | 32.8 | 8.9 | 16.3 | * | 5.7 | 66.3 |
| Worked 1 to 3 years ago | 64.7 | 24.9 | 50.6 | 6.1 | 6.0 | 152.3 |
| Worked 3 to 10 years ago | 64.1 | 36.9 | 108.2 | 12.5 | 5.3 | 227.0 |
| Worked more than 10 years ago | 22.8 | 19.6 | 55.5 | 6.8 | * | 105.7 |

(a) In the next 12 months. (b) Comprises persons who had a job to go to, persons who took active steps to find work and persons who had a job but, up to the end of the survey week, had been away from work without pay for four weeks or longer and had not been actively looking for work. (c) Paid employment, full-time or part-time, for two weeks or more in any job or business.

TABLE 14. PERSONS NOT IN THE LABOUR FORCE WHO WANTED TO WORK AND WERE AVAILABLE TO START WORK WITHIN FOUR WEEKS: WORK EXPERIENCE AND WHETHER LOOKED FOR WORK IN THE LAST TWELVE MONTHS, SEPTEMBER 1983 ('000)

| <i>Work experience</i> | <i>Has looked for work in the last 12 months(a)</i> | | | | <i>Total</i> | <i>Has not looked in the last 12 months</i> | <i>Total</i> |
|-------------------------------|---|------------------------------------|-------------------------------------|--------------------------------------|--------------|---|--------------|
| | <i>Less than 5 weeks ago</i> | <i>5 and less than 8 weeks ago</i> | <i>8 and less than 13 weeks ago</i> | <i>13 and less than 52 weeks ago</i> | | | |
| MALES | | | | | | | |
| Has never had a job(b) | 4.0 | 3.4 | | 3.9 | 11.3 | 25.4 | 36.7 |
| Has had a job(b) | 15.5 | 9.3 | 3.9 | 5.5 | 34.2 | 71.1 | 105.3 |
| Worked in the last year | 9.6 | 6.4 | * | * | 19.0 | 27.5 | 46.5 |
| Within the last 6 months | 6.2 | 3.1 | * | * | 9.9 | 17.5 | 27.4 |
| 6 to 12 months ago | 3.4 | 3.3 | * | * | 9.1 | 10.0 | 19.1 |
| Worked 1 to 3 years ago | 3.6 | 3.6 | * | * | 9.0 | 17.1 | 26.2 |
| Worked 3 to 10 years ago | 3.7 | * | * | * | 5.7 | 22.9 | 28.6 |
| Worked more than 10 years ago | * | * | * | * | * | 3.6 | 4.0 |
| <i>Total</i> | <i>19.5</i> | <i>11.0</i> | <i>5.6</i> | <i>9.4</i> | <i>45.5</i> | <i>96.4</i> | <i>142.0</i> |
| FEMALES | | | | | | | |
| Has never had a job(b) | 4.8 | 4.4 | * | 7.4 | 18.7 | 43.1 | 61.8 |
| Has had a job(b) | 40.1 | 29.3 | 20.1 | 29.6 | 119.0 | 410.9 | 529.9 |
| Worked in the last year | 12.4 | 6.3 | 4.2 | 3.6 | 26.6 | 77.2 | 103.7 |
| Within the last 6 months | 7.3 | * | * | * | 10.6 | 45.9 | 56.5 |
| 6 to 12 months ago | 5.1 | 3.9 | 3.4 | 3.6 | 16.0 | 31.3 | 47.2 |
| Worked 1 to 3 years ago | 11.5 | 7.9 | 7.9 | 8.4 | 35.7 | 90.5 | 126.2 |
| Worked 3 to 10 years ago | 11.5 | 10.2 | 5.8 | 12.0 | 39.5 | 158.9 | 198.4 |
| Worked more than 10 years ago | 4.8 | 4.8 | * | 5.5 | 17.3 | 84.3 | 101.6 |
| <i>Total</i> | <i>44.9</i> | <i>33.7</i> | <i>22.2</i> | <i>37.0</i> | <i>137.8</i> | <i>454.0</i> | <i>591.7</i> |
| PERSONS | | | | | | | |
| Has never had a job(b) | 8.8 | 6.0 | 3.9 | 11.3 | 30.0 | 68.4 | 98.5 |
| Has had a job(b) | 55.6 | 38.6 | 24.0 | 35.1 | 153.3 | 482.0 | 635.2 |
| Worked in the last year | 21.9 | 12.7 | 5.6 | 5.4 | 45.6 | 104.6 | 150.2 |
| Within the last 6 months | 13.5 | 5.5 | * | * | 20.5 | 63.4 | 83.9 |
| 6 to 12 months ago | 8.5 | 7.2 | 4.5 | 4.9 | 25.1 | 41.2 | 66.3 |
| Worked 1 to 3 years ago | 15.0 | 9.4 | 9.9 | 10.3 | 44.7 | 107.6 | 152.3 |
| Worked 3 to 10 years ago | 13.8 | 11.6 | 6.4 | 13.4 | 45.2 | 181.8 | 227.0 |
| Worked more than 10 years ago | 4.8 | 4.8 | * | 5.9 | 17.7 | 87.9 | 105.7 |
| <i>Total</i> | <i>64.4</i> | <i>44.6</i> | <i>27.9</i> | <i>46.4</i> | <i>183.3</i> | <i>550.4</i> | <i>733.7</i> |

(a) Persons who have left a job in the last twelve months are only asked whether they had looked for work since that job. (b) Paid employment, full-time or part-time, for two weeks or more in any job or business.

TABLE 15. PERSONS NOT IN THE LABOUR FORCE WHO WANTED TO WORK AND WERE AVAILABLE TO START WORK WITHIN FOUR WEEKS BUT ARE DISCOURAGED: INTENTION TO LOOK FOR WORK(a), WHETHER LOOKED FOR WORK IN THE LAST 12 MONTHS AND WORK EXPERIENCE, SEPTEMBER 1983 ('000)

| | Intention to look for work(a) | | | | Total |
|--|-------------------------------|------------|----------------|---------------|-------|
| | Intending to look | Might look | Would not look | Does not know | |
| MALES | | | | | |
| Whether looked for work in the last 12 months— | 13.3 | 4.0 | 8.2 | * | 26.4 |
| Had not looked for work | 6.0 | * | 7.4 | * | 16.7 |
| Had looked for work | 7.3 | * | * | * | 9.6 |
| Less than 5 weeks ago | } 5.5 { | * | * | * | 3.1 |
| 5 and less than 8 weeks ago | | * | * | * | 3.0 |
| 8 and less than 13 weeks ago | | * | * | * | * |
| 13 and less than 52 weeks ago | | * | * | * | * |
| Work experience— | | | | | |
| Has never had a job(b) | * | * | * | * | * |
| Has had a job(b) | 12.2 | 3.4 | 7.8 | * | 24.2 |
| Worked in the last year | 5.9 | * | * | * | 7.7 |
| Within the last 6 months | 3.9 | * | * | * | 4.5 |
| 6 to 12 months ago | * | * | * | * | 3.3 |
| Worked 1 to 3 years ago | 3.7 | * | * | * | 7.0 |
| Worked 3 to 10 years ago | * | * | 3.7 | * | 8.2 |
| Worked more than 10 years ago | * | * | * | * | * |
| FEMALES | | | | | |
| Whether looked for work in the last 12 months— | 41.4 | 16.3 | 30.1 | 4.0 | 91.8 |
| Had not looked for work | 17.3 | 10.8 | 27.6 | 3.8 | 59.5 |
| Had looked for work | 24.1 | 5.5 | * | * | 32.3 |
| Less than 5 weeks ago | 7.5 | * | * | * | 8.0 |
| 5 and less than 8 weeks ago | 7.5 | * | * | * | 8.4 |
| 8 and less than 13 weeks ago | 3.4 | * | * | * | 5.8 |
| 13 and less than 52 weeks ago | 5.7 | * | * | * | 10.1 |
| Work experience— | | | | | |
| Has never had a job(b) | 4.0 | * | * | * | 8.2 |
| Has had a job(b) | 37.5 | 14.9 | 28.5 | * | 83.7 |
| Worked in the last year | 7.9 | * | * | * | 11.9 |
| Within the last 6 months | 4.2 | * | * | * | 6.0 |
| 6 to 12 months ago | 3.7 | * | * | * | 5.9 |
| Worked 1 to 3 years ago | 11.0 | * | 4.7 | * | 19.6 |
| Worked 3 to 10 years ago | 12.5 | 7.1 | 10.6 | * | 31.1 |
| Worked more than 10 years ago | 6.2 | 3.1 | 11.1 | * | 21.0 |
| PERSONS | | | | | |
| Whether looked for work in the last 12 months— | 54.7 | 20.4 | 38.3 | 4.9 | 118.2 |
| Had not looked for work | 23.3 | 13.7 | 35.0 | 4.2 | 76.2 |
| Had looked for work | 31.4 | 6.7 | 3.2 | * | 42.0 |
| Less than 5 weeks ago | 10.3 | * | * | * | 11.1 |
| 5 and less than 8 weeks ago | 10.1 | * | * | * | 11.4 |
| 8 and less than 13 weeks ago | 3.9 | * | * | * | 6.7 |
| 13 and less than 52 weeks ago | 7.0 | 3.3 | * | * | 12.7 |
| Work experience— | | | | | |
| Has never had a job(b) | 5.0 | * | * | * | 10.3 |
| Has had a job(b) | 49.7 | 18.3 | 36.3 | 3.6 | 107.9 |
| Worked in the last year | 13.8 | * | 3.1 | * | 19.6 |
| Within the last 6 months | 8.0 | * | * | * | 10.4 |
| 6 to 12 months ago | 5.7 | * | * | * | 9.2 |
| Worked 1 to 3 years ago | 14.7 | 4.0 | 6.9 | * | 26.6 |
| Worked 3 to 10 years ago | 14.7 | 8.8 | 14.3 | * | 39.3 |
| Worked more than 10 years ago | 6.5 | 3.2 | 12.0 | * | 22.4 |

(a) In the next 12 months. (b) Paid employment, full-time or part-time, for two weeks or more in any job or business.

TABLE 16. PERSONS NOT IN THE LABOUR FORCE WHO WANT TO WORK AND ARE AVAILABLE TO START WORK WITHIN 4 WEEKS: SUMMARY OF CHARACTERISTICS, SEPTEMBER 1983
(^{' 000})

| | Discouraged jobseekers | | | All persons who want to work and are available to start work within 4 weeks | | |
|--|------------------------|-------------|--------------|---|--------------|--------------|
| | Males | Females | Persons | Males | Females | Persons |
| Total | 26.4 | 91.8 | 118.2 | 142.0 | 591.7 | 733.7 |
| Marital status— | | | | | | |
| Married | 17.8 | 69.7 | 87.5 | 63.3 | 459.6 | 522.8 |
| Not married | 8.5 | 22.2 | 30.7 | 78.7 | 132.1 | 210.8 |
| Age group (years)— | | | | | | |
| 15-19 | 3.0 | 3.6 | 6.6 | 47.1 | 57.5 | 104.5 |
| 20-24 | * | 4.7 | 6.3 | 10.6 | 59.4 | 70.0 |
| 25-34 | * | 20.5 | 22.5 | 14.4 | 204.2 | 218.6 |
| 35-44 | * | 25.4 | 26.7 | 10.7 | 146.6 | 157.3 |
| 45-54 | 3.3 | 19.3 | 22.6 | 11.9 | 70.0 | 81.9 |
| 55-64 | 7.3 | 13.1 | 20.3 | 28.2 | 42.5 | 70.8 |
| 65 and over | 7.9 | 5.2 | 13.1 | 19.1 | 11.4 | 30.6 |
| Type of work preferred— | | | | | | |
| Prefers to work full-time | 12.8 | 20.6 | 33.5 | 69.0 | 94.5 | 163.6 |
| Prefers to work part-time | 11.6 | 66.0 | 77.6 | 65.5 | 472.7 | 538.2 |
| No preference | * | 5.2 | 7.1 | 7.5 | 24.5 | 31.9 |
| Whether looked for work in the last 12 months— | | | | | | |
| Had not looked for work | 16.7 | 59.5 | 76.2 | 96.4 | 454.0 | 550.4 |
| Had looked for work | 9.6 | 32.3 | 42.0 | 45.5 | 137.8 | 183.3 |
| Less than 5 weeks ago | 3.1 | 8.0 | 11.1 | 19.5 | 44.9 | 64.4 |
| 5 and less than 8 weeks ago | 3.0 | 8.4 | 11.4 | 11.0 | 33.7 | 44.6 |
| 8 and less than 13 weeks ago | * | 5.8 | 6.7 | 5.6 | 22.2 | 27.9 |
| 13 and less than 52 weeks ago | * | 10.1 | 12.7 | 9.4 | 37.0 | 46.4 |
| Work experience— | | | | | | |
| Has never had a job(a) | * | 8.2 | 10.3 | 36.7 | 61.8 | 98.5 |
| Has had a job(a) | 24.2 | 83.7 | 107.9 | 105.3 | 529.9 | 635.2 |
| Worked in the last year | 7.7 | 11.9 | 19.6 | 46.5 | 103.7 | 150.2 |
| Within the last 6 months | 4.5 | 6.0 | 10.4 | 27.4 | 56.5 | 83.9 |
| 6 to 12 months ago | 3.3 | 5.9 | 9.2 | 19.1 | 47.2 | 66.3 |
| Worked 1 to 3 years ago | 7.0 | 19.6 | 26.6 | 26.2 | 126.2 | 152.3 |
| Worked 3 to 10 years ago | 8.2 | 31.1 | 39.3 | 28.6 | 198.4 | 227.0 |
| Worked more than 10 years ago | * | 21.0 | 22.4 | 4.0 | 101.6 | 105.7 |
| Reason for leaving last job(a)— | | | | | | |
| Dismissed, retrenched | 8.7 | 15.8 | 24.5 | 23.8 | 57.7 | 81.5 |
| Seasonal/temporary, returned to studies | * | 10.7 | 12.6 | 16.9 | 62.5 | 79.4 |
| Retired, did not want to work any longer | 6.9 | 4.7 | 11.6 | 22.2 | 22.0 | 44.2 |
| Own ill health or injury | * | 6.0 | 8.4 | 22.0 | 32.8 | 54.8 |
| Family considerations | * | 27.1 | 27.2 | * | 248.0 | 249.3 |
| Left to get married | * | 9.0 | 9.0 | * | 48.9 | 48.9 |
| Left to have children | * | 12.2 | 12.2 | * | 159.8 | 159.8 |
| Other family considerations | * | 5.8 | 6.0 | * | 39.3 | 40.6 |
| Travel, moved house, spouse transferred | * | 11.0 | 12.0 | 4.1 | 53.3 | 57.4 |
| Unsatisfactory work arrangements | * | 6.1 | 8.7 | 7.5 | 32.1 | 39.7 |
| Other reasons | * | * | * | 5.2 | 12.8 | 18.0 |
| Not asked(b) | * | * | * | * | 8.7 | 10.9 |
| Never had a job(a) | * | 8.2 | 10.3 | 36.7 | 61.8 | 98.5 |

(a) Paid employment, full-time or part-time, for two weeks or more in any job or business. (b) Persons who want a job but, up to the end of the survey week, had been away from work without pay for four weeks or longer and had not been actively looking for work.

TABLE 17. PERSONS NOT IN THE LABOUR FORCE WHO WANTED TO WORK AND WERE AVAILABLE TO START WORK WITHIN FOUR WEEKS: AGE AND MAIN REASON FOR NOT ACTIVELY LOOKING FOR WORK, SEPTEMBER 1983
(⁰ 000)

| Main reason for not actively looking for work | Age group (years) | | | | | | | | Total |
|--|-------------------|-------------|--------------|--------------|-------------|-------------|-------------|--------------|--------------|
| | 15-19 | 20-24 | 25-34 | 35-44 | 45-54 | 55-59 | 60-64 | 65 and over | |
| MALES | | | | | | | | | |
| Had a job to go to | * | * | * | * | * | * | * | * | 3.3 |
| Personal reasons(a) | 37.8 | 6.5 | 7.4 | 4.9 | 6.5 | 6.4 | 10.6 | 10.6 | 90.7 |
| Own ill health, disability | 3.2 | | 5.2 | * | 3.6 | 3.2 | 5.1 | 3.0 | 25.9 |
| Attending an educational institution | 35.0 | 3.2 | * | * | * | * | * | * | 39.9 |
| Has no need to work | * | * | * | * | * | * | 3.5 | 3.4 | 10.8 |
| Welfare payments/pension may be affected | * | * | * | * | * | * | 5.9 | * | 7.7 |
| Moved house/holidays | | 3.0 | | * | * | * | * | * | 4.9 |
| Discouraged jobseekers | 3.0 | | 3.6 | * | 3.3 | * | 4.8 | 7.9 | 26.4 |
| Considered too young or too old by employers | * | * | * | * | * | * | 3.5 | 5.9 | 11.1 |
| No jobs in locality or line of work | | 3.1 | | | | 3.1 | | * | 7.4 |
| No jobs at all | * | * | * | * | * | * | * | * | 6.2 |
| Total(a) | 47.1 | 10.6 | 14.4 | 10.7 | 11.9 | 10.5 | 17.8 | 19.1 | 142.0 |
| FEMALES | | | | | | | | | |
| Had a job to go to | | 3.6 | | 3.7 | * | * | * | * | 8.0 |
| Personal reasons | 40.8 | 10.2 | 24.4 | 32.3 | 22.0 | 12.4 | 6.7 | 4.3 | 153.1 |
| Own ill health, disability | * | 4.0 | 5.3 | 7.5 | 8.8 | 4.0 | 4.6 | * | 36.1 |
| Attending an educational institution | 36.7 | 4.4 | * | * | * | * | * | * | 43.0 |
| Has no need to work | 3.2 | | 10.1 | 12.8 | 5.2 | 4.9 | 3.4 | * | 39.7 |
| Give others a chance | * | * | | 3.5 | 3.6 | * | * | * | 9.7 |
| Welfare payments/pension may be affected | * | * | 3.0 | 4.9 | 3.1 | * | * | * | 14.4 |
| Moved house/holidays | * | * | 3.0 | | 4.8 | * | * | * | 10.2 |
| Family reasons | 6.7 | 38.4 | 135.3 | 65.2 | 20.7 | 4.8 | * | * | 273.8 |
| Ill health of other than self | * | 3.6 | | 3.8 | 3.7 | * | * | * | 12.6 |
| Unable to find child care/preferred to look after children | 6.4 | 36.7 | 123.1 | 46.5 | 6.6 | * | * | * | 220.3 |
| Other family considerations | * | * | 9.5 | 14.9 | 12.0 | | 3.3 | * | 40.9 |
| Discouraged jobseekers | 3.6 | 4.7 | 20.5 | 25.4 | 19.3 | 6.5 | 6.5 | 5.2 | 91.8 |
| Considered too young or too old by employers | * | * | * | * | 3.2 | 3.4 | 4.6 | 4.4 | 17.9 |
| Language or racial difficulties | * | * | * | * | * | * | * | * | * |
| Lacks necessary schooling, training, skills or experience | * | 3.1 | | 3.2 | | * | * | * | 7.2 |
| No jobs in locality or line of work | 3.0 | | 10.1 | 9.7 | 6.1 | * | * | * | 30.8 |
| No jobs at all | 3.8 | | 6.7 | 11.2 | 8.7 | 3.1 | * | * | 33.5 |
| No jobs in suitable hours | * | * | 6.3 | 5.9 | * | * | * | * | 14.3 |
| Other reasons | 3.2 | | 5.1 | 6.3 | 3.6 | * | * | * | 20.2 |
| Don't know | * | * | * | 3.9 | | * | * | * | 7.4 |
| Took active steps to find work | 4.7 | | 5.5 | 3.6 | | * | * | * | 14.4 |
| Not asked(b) | * | * | 3.9 | 3.2 | * | * | * | * | 8.7 |
| Total | 57.5 | 59.4 | 204.2 | 146.6 | 70.0 | 26.6 | 16.0 | 11.4* | 591.7 |
| PERSONS | | | | | | | | | |
| Had a job to go to | | 5.5 | | 4.6 | * | * | * | * | 11.4 |
| Personal reasons | 78.6 | 16.7 | 31.8 | 37.2 | 28.5 | 18.8 | 17.3 | 14.9 | 243.8 |
| Own ill health, disability | * | 6.4 | 10.5 | 10.1 | 12.3 | 7.2 | 7.4 | 5.4 | 61.9 |
| Attending an educational institution | 71.6 | 5.2 | 3.6 | * | * | * | * | * | 82.9 |
| Has no need to work | 4.3 | | 10.1 | 13.3 | 6.4 | 6.0 | 6.2 | 4.1 | 50.5 |
| Give others a chance | * | * | | 3.5 | 3.8 | | 3.7 | * | 11.2 |
| Welfare payments/pension may be affected | * | * | 3.4 | 5.6 | | 7.5 | | 4.1 | 22.1 |
| Moved house/holidays | 3.3 | | 3.6 | 3.5 | 4.2 | * | * | * | 15.2 |
| Family reasons | 6.7 | 38.4 | 136.2 | 66.2 | 21.5 | 5.1 | 3.1 | * | 277.2 |
| Ill health of other than self | * | 3.6 | | 3.8 | 4.1 | * | * | * | 13.4 |
| Unable to find child care/preferred to look after children | 6.4 | 36.7 | 124.0 | 47.2 | 7.2 | * | * | * | 222.4 |
| Other family considerations | * | * | 9.5 | 15.3 | 12.0 | 3.0 | * | * | 41.4 |
| Discouraged jobseekers | 6.6 | 6.3 | 22.5 | 26.7 | 22.6 | 9.0 | 11.4 | 13.1 | 118.2 |
| Considered too young or too old by employers | * | * | * | * | 3.2 | 4.7 | 8.0 | 10.3 | 29.0 |
| Language or racial difficulties | * | * | * | * | * | * | * | * | * |
| Lacks necessary schooling, training, skills or experience | * | * | 3.0 | 3.7 | | * | * | * | 8.4 |
| No jobs in locality or line of work | * | 3.0 | 11.3 | 10.1 | 7.5 | 4.4 | * | * | 38.2 |
| No jobs at all | 3.5 | * | 7.3 | 12.1 | 9.7 | 4.2 | * | * | 39.7 |
| No jobs in suitable hours | * | * | 6.3 | 5.9 | * | * | * | * | 15.1 |
| Other reasons | 4.9 | | 5.8 | 7.9 | 4.2 | 3.4 | * | * | 27.2 |
| Don't know | 3.2 | | | 3.9 | | * | * | * | 8.1 |
| Took active steps to find work | 5.7 | 3.1 | 7.4 | 3.4 | * | * | * | * | 21.9 |
| Not asked(b) | * | * | 4.8 | 3.4 | * | * | * | * | 10.9 |
| Total | 104.5 | 70.0 | 218.6 | 157.3 | 81.9 | 37.0 | 33.7 | 30.6 | 733.7 |

(a) Includes reasons not shown separately. (b) Persons who had a job but, up to the end of survey week, had been away from work without pay for four weeks or longer and had not been actively looking for work.

TABLE 18. PERSONS NOT IN THE LABOUR FORCE WHO WANTED TO WORK AND WERE AVAILABLE TO START WORK WITHIN 4 WEEKS: AGE AND ALL REASONS FOR NOT ACTIVELY LOOKING FOR WORK, SEPTEMBER 1983 ('000)

| All reasons for not actively looking for work | Age group (years) | | | | | | | | Total | |
|--|-------------------|-------|-------|-------|-------|-------|-------|-------------|-------|-------|
| | 15-19 | 20-24 | 25-34 | 35-44 | 45-54 | 55-59 | 60-64 | 65 and over | | |
| MALES | | | | | | | | | | |
| Had a job to go to | * | * | * | * | * | * | * | * | * | 3.3 |
| Personal reasons(a) | | | | | | | | | | |
| Own ill health, disability | 3.5 | | 5.2 | 3.5 | 4.3 | 4.5 | 5.7 | 4.3 | | 31.0 |
| Attending an educational institution | 36.8 | 3.2 | * | * | * | * | * | * | * | 41.7 |
| Has no need to work | * | * | * | * | 3.8 | | 4.6 | 4.6 | | 15.4 |
| Welfare payments/pension may be affected | * | * | * | * | * | 3.8 | | 3.6 | | 10.5 |
| Moved house/holidays | * | * | * | * | * | * | * | * | | 5.7 |
| Discouraged jobseekers | | | | | | | | | | |
| Considered too young or too old by employers | * | * | * | * | * | * | 4.7 | 7.9 | | 15.8 |
| No jobs in locality or line of work | 3.4 | | * | * | 4.0 | | 3.8 | | | 13.7 |
| No jobs at all | 3.0 | | | 3.9 | | | 3.2 | | | 10.1 |
| FEMALES | | | | | | | | | | |
| Had a job to go to | * | 3.7 | | 4.0 | * | * | * | * | | 9.1 |
| Personal reasons | | | | | | | | | | |
| Own ill health, disability, pregnancy | * | 4.8 | 8.0 | 9.5 | 11.5 | 5.4 | 5.8 | * | | 46.9 |
| Attending an educational institution | 38.7 | * | 3.0 | * | * | * | * | * | | 46.9 |
| Has no need to work | 4.8 | | 16.1 | 18.1 | 7.6 | 5.9 | 3.2 | * | | 57.4 |
| Give others a chance | * | * | * | 5.1 | 5.0 | 3.5 | * | * | | 18.3 |
| Welfare payments/pension may be affected | 3.3 | | 4.7 | 7.8 | 3.0 | | 6.0 | | | 24.8 |
| Moved house/holidays | * | * | 4.1 | 4.5 | 3.1 | | * | * | | 14.6 |
| Family reasons | | | | | | | | | | |
| Ill health of other than self | * | * | 3.4 | 4.9 | 3.6 | | 3.0 | * | | 17.0 |
| Unable to find child care/preferred to look after children | 6.8 | 41.7 | 144.5 | 60.6 | 9.1 | * | * | * | | 263.9 |
| Other family considerations | * | 3.0 | 16.4 | 21.3 | 17.0 | 3.7 | * | * | | 64.5 |
| Discouraged jobseekers | | | | | | | | | | |
| Considered too young or too old by employers | | 3.4 | | 4.1 | 7.6 | 4.5 | 6.5 | 5.8 | | 31.9 |
| Language or racial difficulties | * | | 3.4 | * | * | * | * | * | | 4.4 |
| Lacks necessary schooling, training, skills or experience | * | * | 6.3 | 4.8 | 3.2 | | * | * | | 17.6 |
| No jobs in locality or line of work | * | 3.9 | 17.6 | 15.2 | 10.1 | | 3.5 | * | | 53.0 |
| No jobs at all | * | 3.6 | 11.4 | 13.9 | 11.2 | | 4.2 | * | | 47.8 |
| No jobs in suitable hours | 4.5 | | 13.0 | 11.3 | * | * | * | * | | 31.6 |
| Other reasons(b) | 4.8 | | 8.7 | 10.1 | 5.3 | | 3.1 | * | | 33.0 |
| Don't know | * | * | | 5.3 | | * | * | * | | 7.4 |
| PERSONS | | | | | | | | | | |
| Had a job to go to | 3.0 | | 3.4 | 4.8 | * | * | * | * | | 12.5 |
| Personal reasons | | | | | | | | | | |
| Own ill health, disability, pregnancy | 3.0 | 7.3 | 13.2 | 13.0 | 15.8 | 9.9 | 8.6 | 7.3 | | 78.0 |
| Attending an educational institution | 75.5 | 5.6 | 4.2 | 3.1 | * | * | * | * | | 88.6 |
| Has no need to work | 3.6 | * | 16.4 | 18.6 | 9.6 | 7.8 | 7.8 | 6.2 | | 72.8 |
| Give others a chance | * | * | * | 5.1 | 5.2 | 4.3 | 4.7 | * | | 22.1 |
| Welfare payments/pension may be affected | 3.4 | | 5.6 | 8.6 | 4.3 | * | 5.4 | 5.2 | | 35.3 |
| Moved house/holidays | 4.9 | | 4.7 | 5.3 | 3.1 | * | * | * | | 20.3 |
| Family reasons | | | | | | | | | | |
| Ill health of other than self | * | * | 3.4 | 4.9 | 3.9 | | 3.4 | * | | 17.9 |
| Unable to find child care/preferred to look after children | 6.8 | 41.7 | 145.5 | 61.5 | 9.6 | * | * | * | | 266.4 |
| Other family considerations | * | 3.0 | 16.4 | 21.7 | 17.3 | 4.1 | * | * | | 65.9 |
| Discouraged jobseekers | | | | | | | | | | |
| Considered too young or too old by employers | | 4.0 | | 4.3 | 8.4 | 6.3 | 11.2 | 13.7 | | 47.7 |
| Language or racial difficulties | * | * | | 3.3 | * | * | * | * | | 5.0 |
| Lacks necessary schooling, training, skills or experience | 4.3 | | 6.9 | 4.9 | 3.1 | * | * | * | | 21.3 |
| No jobs in locality or line of work | 3.5 | 5.3 | 19.5 | 15.8 | 12.2 | 4.3 | 3.3 | * | | 66.7 |
| No jobs at all | 5.2 | 4.3 | 13.1 | 14.9 | 12.5 | * | 3.7 | * | | 57.9 |
| No jobs in suitable hours | 4.0 | | 13.0 | 11.3 | | | 3.1 | * | | 33.4 |
| Other reasons(b) | 4.4 | 3.5 | 9.5 | 11.7 | 6.0 | 3.5 | 3.2 | * | | 41.9 |
| Don't know | | 3.2 | | 3.9 | | * | * | * | | 8.1 |

(a) Includes reasons not shown separately. (b) Includes persons who gave no reason.

C. PERSONS WITHOUT MARGINAL ATTACHMENT TO THE LABOUR FORCE

TABLE 19. PERSONS NOT IN THE LABOUR FORCE WHO WANTED TO WORK BUT WERE NOT ACTIVELY LOOKING FOR WORK AND WERE NOT AVAILABLE TO START WORK WITHIN FOUR WEEKS: REASON NOT AVAILABLE TO START WORK WITHIN FOUR WEEKS AND INTENTION TO LOOK FOR WORK(a), SEPTEMBER 1983 ('000)

| Reason not available to start work within four weeks | Intention to look for work(a) | | | | | Total | | |
|--|-------------------------------|------------|----------------|---------------|--------------|-------|---------|---------|
| | Intending to look | Might look | Would not look | Does not know | Not asked(b) | Males | Females | Persons |
| Personal reasons | 58.4 | 20.1 | 47.0 | 4.9 | 6.1 | 58.5 | 78.0 | 136.5 |
| Own ill health etc. | 17.5 | 10.7 | 25.9 | 3.4 | 5.7 | 24.4 | 38.8 | 63.2 |
| Studying | 35.9 | 7.7 | 15.2 | * | * | 31.8 | 28.7 | 60.5 |
| At school | 32.4 | 7.5 | 13.7 | * | * | 29.0 | 26.4 | 55.3 |
| Other educational institution | 3.4 | * | * | * | * | * | * | 5.2 |
| Moved house/holidays | 5.1 | * | 5.8 | * | * | * | 10.4 | 12.8 |
| Family reasons | 18.0 | 10.6 | 49.7 | 3.3 | 9.0 | * | 87.6 | 90.5 |
| Ill health of other than self | * | * | 6.9 | * | * | * | 9.2 | 11.6 |
| No suitable childcare | 3.6 | * | 7.9 | * | * | * | 14.1 | 14.3 |
| Children too young etc. | 12.6 | 6.9 | 34.8 | * | 8.0 | * | 64.3 | 64.6 |
| Other reasons | * | 3.4 | 9.7 | * | * | 3.4 | 13.9 | 17.3 |
| Total | | | | | | | | |
| Males | 30.1 | 11.5 | 17.9 | * | * | 64.8 | .. | .. |
| Females | 49.3 | 22.6 | 88.4 | 6.0 | 13.1 | .. | 179.4 | .. |
| Persons | 79.4 | 34.0 | 106.4 | 8.5 | 16.0 | .. | .. | 244.2 |

(a) In the next twelve months. (b) Comprises persons who had a job to go to, persons who took active steps to find work and persons who had a job but, up to the end of survey week, had been away from work without pay for four weeks or longer and had not been actively looking for work.

TABLE 20. PERSONS NOT IN THE LABOUR FORCE WHO WANTED TO WORK BUT WERE NOT ACTIVELY LOOKING FOR WORK AND WERE NOT AVAILABLE TO START WORK WITHIN FOUR WEEKS: REASON NOT AVAILABLE TO START WORK WITHIN FOUR WEEKS AND AGE, SEPTEMBER 1983 ('000)

| Reason not available to start work within four weeks | Age group (years) | | | | | | | | Total |
|--|-------------------|-------|-------|-------|-------|-------|-------|-------------|-------|
| | 15-19 | 20-24 | 25-34 | 35-44 | 45-54 | 55-59 | 60-64 | 65 and over | |
| Personal reasons | 50.1 | 17.3 | 22.2 | 18.1 | 13.1 | 8.1 | 4.8 | * | 136.5 |
| Own ill health, etc. | * | 8.8 | 14.3 | 15.2 | 10.2 | 6.3 | 3.8 | * | 63.2 |
| Studying | 46.8 | 7.8 | 3.7 | * | * | * | * | * | 60.5 |
| At school | 45.3 | 6.0 | * | * | * | * | * | * | 55.3 |
| Other educational institution | 3.4 | * | * | * | * | * | * | * | 5.2 |
| Moved house/holidays | * | * | 4.2 | 3.9 | | 3.2 | | | 12.8 |
| Family reasons | * | 14.7 | 49.0 | 17.4 | 3.5 | * | 3.0 | | 90.5 |
| Ill health of other than self | * | * | * | 3.5 | 3.0 | | * | * | 11.6 |
| No suitable child care | * | 3.3 | 6.7 | 4.0 | * | * | * | * | 14.3 |
| Children too young etc. | * | 10.9 | 40.0 | 9.9 | * | * | * | * | 64.6 |
| Other reasons | * | * | 4.1 | 4.4 | 3.2 | * | 3.0 | | 17.3 |
| Total | | | | | | | | | |
| Males | 25.3 | 9.4 | 5.5 | 9.6 | 5.0 | 3.9 | 3.0 | 3.1 | 64.8 |
| Females | 27.3 | 23.3 | 69.8 | 30.3 | 14.9 | 6.3 | 5.1 | * | 179.4 |
| Persons | 52.6 | 32.7 | 75.4 | 40.0 | 19.9 | 10.2 | 8.1 | 5.5 | 244.2 |

TABLE 21. PERSONS NOT IN THE LABOUR FORCE WHO WANTED TO WORK BUT WERE NOT ACTIVELY LOOKING FOR WORK AND WERE NOT AVAILABLE TO START WORK WITHIN FOUR WEEKS: TYPE OF WORK PREFERRED AND REASON NOT AVAILABLE TO START WORK WITHIN FOUR WEEKS, SEPTEMBER 1983 ('000)

| <i>Reason not available to start work within four weeks</i> | <i>Males</i> | | | <i>Females</i> | | | <i>Persons</i> | | |
|---|-----------------------|------------------|-----------------|-----------------------|------------------|-----------------|-----------------------|------------------|-----------------|
| | <i>Prefer to work</i> | | | <i>Prefer to work</i> | | | <i>Prefer to work</i> | | |
| | <i>Full-time</i> | <i>Part-time</i> | <i>Total(a)</i> | <i>Full-time</i> | <i>Part-time</i> | <i>Total(a)</i> | <i>Full-time</i> | <i>Part-time</i> | <i>Total(a)</i> |
| Personal reasons | 41.6 | 13.4 | 58.5 | 27.4 | 46.4 | 78.0 | 69.0 | 59.8 | 136.5 |
| Own ill health, etc. | 18.0 | 3.8 | 24.4 | 9.3 | 27.1 | 38.8 | 27.3 | 30.8 | 63.2 |
| Studying | 22.4 | 8.6 | 31.8 | 17.4 | 10.2 | 28.7 | 39.7 | 18.8 | 60.5 |
| At school | 20.2 | 8.0 | 29.0 | 16.4 | 8.9 | 26.4 | 36.6 | 16.9 | 55.3 |
| Other educational institution | * | * | * | * | * | * | 3.1 | * | 5.2 |
| Moved house/holidays | * | * | * | * | 9.1 | 10.4 | * | 10.1 | 12.8 |
| Family reasons | * | * | * | 15.8 | 68.6 | 87.6 | 17.0 | 69.9 | 90.5 |
| Ill health of other than self | * | * | * | * | 7.2 | 9.2 | * | 8.4 | 11.6 |
| No suitable childcare | * | * | * | 3.3 | 10.6 | 14.1 | 3.5 | 10.6 | 14.3 |
| Children too young, etc. | * | * | * | 11.0 | 50.8 | 64.3 | 11.1 | 51.0 | 64.6 |
| Other reasons | * | * | 3.4 | * | 11.6 | 13.9 | * | 13.3 | 17.3 |
| Total | | | | | | | | | |
| Males | 43.9 | 16.3 | 64.8 | .. | .. | .. | .. | .. | .. |
| Females | .. | .. | .. | 44.8 | 126.7 | 179.4 | .. | .. | .. |
| Persons | .. | .. | .. | .. | .. | .. | 88.8 | 143.0 | 244.2 |

(a) Includes those persons who have no preference.

TECHNICAL NOTE

Estimation procedure

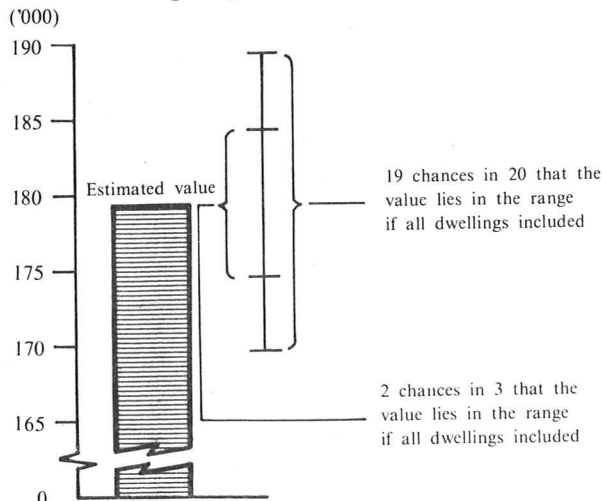
The estimates are derived from the population survey by use of a ratio estimation procedure, which ensures that the estimates conform to an independently estimated distribution of the population for each capital city and remainder of State by age and sex, rather than to the corresponding distribution within the sample itself.

Reliability of the estimates

2. Since the estimates in this publication are based on information obtained from occupants of a sample of dwellings, they are subject to sampling variability: that is, they may differ from the figures that would have been produced if all dwellings had been included in the survey. One measure of the likely difference is given by the *standard error*, which indicates the extent to which an estimate might have varied by chance because only a sample of dwellings was included. There are about two chances in three that a sample estimate will differ by less than one standard error from the figure that would have been obtained if all dwellings had been included, and about nineteen chances in twenty that the difference will be less than two standard errors. Another measure of the likely difference is the *relative standard error*, which is obtained by expressing the standard error as a percentage of the estimate.

3. Space does not allow for the separate indication of the standard errors of all estimates in this publication. A table of standard errors for general application is given on the following page. Since they are averages based on calculations for a limited number of past surveys over a wide range of labour force characteristics these figures will not give a precise measure of the standard error of a particular estimate but they will provide an indication of its magnitude.

4. An example of the calculation and the use of standard errors in relation to estimates of persons is as follows. Table 21 on the previous page shows the estimated number of females in Australia who were not in the labour force and who wanted to work but were not available to start work within four weeks was 179,400. Since this estimate is between 100,000 and 200,000 the standard error for Australia will be between 3,900 and 5,100 in the standard error table and can be approximated as 4,900 (rounded to the nearest 100). Therefore, there are about two chances in three that the value that would have been produced if all dwellings had been included in the survey will fall in the range 174,500 to 184,300 and about nineteen chances in twenty that the value will fall within the range 169,600 to 189,200. This example is illustrated in the following diagram.



5. As can be seen from the standard error table, *the smaller the estimate the higher is the relative standard error*. Very small estimates are thus subject to such high standard errors (relative to the size of the estimate) as to detract seriously from their value for most reasonable uses. In the tables in this publication, estimates less than the lowest levels shown in the standard error table have not been published. Although figures for these small components can in some cases be derived by subtraction, they should not be regarded as reliable.

6. Proportions and percentages formed from the ratio of two estimates are also subject to sampling errors. The size of the error depends on the accuracy of both the numerator and the denominator. The formula for the relative standard error (RSE) of a proportion is given below:

$$\text{RSE (x/y)} = \sqrt{[\text{RSE (x)}]^2 - [\text{RSE (y)}]^2}$$

7. Considering the example from paragraph 4 above, of the 179,400 females who wanted to work but were not available to start work within four weeks only 28,700 or 16.0 per cent were studying. The standard error of 28,700 is approximately 2,300 so the relative standard error is 8.0 per cent. The relative standard error for 179,400 is 2.7 per cent. Applying the above formula, the relative standard error of the proportion is $\sqrt{(8.0)^2 - (2.7)^2}$ or 7.5 per cent, giving a standard error for the proportion (16.0 per cent) of 1.2 percentage points. Therefore, there are about two chances in three that the proportion of females who were studying and who wanted to work but were not available to start work within four weeks was between 14.8 per cent and 17.2 per cent and nineteen chances in twenty the proportion was within the range 13.6 per cent to 18.4 per cent.

8. Published figures may also be used to estimate the difference between two survey estimates (of numbers or percentages). Such a figure is itself an estimate and is therefore subject to sampling error. The sampling error of the difference between two estimates depends on their standard errors and the relationship (correlation) between them. An approximate standard error (SE) of the difference between two estimates (x-y) may be calculated by the following formula:

$$\text{SE (x-y)} = \sqrt{[\text{SE (x)}]^2 + [\text{SE (y)}]^2}$$

While this formula will only be exact for differences between separate and uncorrelated characteristics or sub-populations it is expected to provide a good approximation for all differences likely to be of interest in this publication.

9. The imprecision due to sampling variability, which is measured by the standard error, should not be confused with inaccuracies that may occur because of imperfections in reporting by interviewers and respondents and errors made in the coding and processing of data. Inaccuracies of this kind are referred to as the *non-sampling error*, and they may occur in any enumeration, whether it be a full count or only a sample.

STANDARD ERRORS OF ESTIMATES

| Size of estimate | N.S.W. | Vic. | Qld | S.A. | W.A. | Tas. | N.T. | A.C.T. | Australia | |
|------------------|--------|-------|-------|-------|-------|-------|-------|--------|------------------------------------|------|
| | | | | | | | | | Relative standard error (per cent) | |
| —number— | | | | | | | | | | |
| 1,000 | | | | | | 250 | — | — | | |
| 1,500 | | | | — | — | 300 | 410 | 390 | | |
| 2,000 | | | — | 460 | 490 | 340 | 470 | 440 | | |
| 2,500 | | | 630 | 510 | 540 | 380 | 510 | 480 | | |
| 3,000 | — | — | 690 | 550 | 580 | 410 | 550 | 510 | 800 | 26.7 |
| 3,500 | 920 | 910 | 740 | 590 | 630 | 430 | 590 | 540 | 860 | 24.6 |
| 4,000 | 980 | 960 | 780 | 620 | 660 | 460 | 620 | 560 | 920 | 23.0 |
| 4,500 | 1,000 | 1,000 | 820 | 650 | 700 | 480 | 650 | 590 | 970 | 21.6 |
| 5,000 | 1,100 | 1,100 | 860 | 680 | 730 | 500 | 680 | 610 | 1,000 | 20.0 |
| 6,000 | 1,200 | 1,200 | 930 | 730 | 790 | 530 | 740 | 650 | 1,100 | 18.0 |
| 10,000 | 1,500 | 1,400 | 1,200 | 900 | 970 | 640 | 910 | 750 | 1,400 | 14.0 |
| 20,000 | 2,000 | 1,900 | 1,500 | 1,200 | 1,300 | 810 | 1,200 | 910 | 2,000 | 10.0 |
| 50,000 | 3,000 | 2,700 | 2,200 | 1,600 | 1,700 | 1,100 | 1,700 | 1,100 | 2,900 | 5.8 |
| 100,000 | 3,900 | 3,500 | 2,800 | 2,100 | 2,200 | 1,300 | | 1,300 | 3,900 | 3.9 |
| 200,000 | 5,000 | 4,400 | 3,600 | 2,600 | 2,700 | 1,500 | | | 5,100 | 2.6 |
| 300,000 | 5,800 | 5,000 | 4,100 | 2,900 | 3,000 | | | | 6,000 | 2.0 |
| 500,000 | 6,900 | 5,800 | 4,800 | 3,300 | 3,500 | | | | 7,200 | 1.4 |
| 1,000,000 | 8,500 | 7,000 | 5,900 | | | | | | 9,100 | 0.9 |
| 2,000,000 | 10,000 | 8,400 | | | | | | | 11,000 | 0.6 |
| 5,000,000 | | | | | | | | | 15,000 | 0.3 |

Note. Estimates below the levels indicated have not been published, see paragraph 5 on page 24.

